



CORDOVA SAFETY PRODUCTS

In 1994, Cordova Safety Products started as a small glove importing company in Memphis, Tennessee. After over 17 years of persistent growth and expansion in the business of keeping workers safe, Cordova Safety Products has evolved into a full-line supplier of Personal Protective Equipment. Our company's wide range of Hand Protection is now complemented by an ever-expanding variety of Safety Eyewear, Rainwear, Disposable Clothing, Safety Vests, Respirators, Earplugs, Helmets, Back Support Belts, Barricade Tape and Safety Fencing, all manufactured with our customers in mind.

At Cordova Safety Products, we pride ourselves on our consistent pursuit of one objective: customer satisfaction. If you are a current Cordova customer, we sincerely thank you for your business and promise to work hard to maintain our relationship with you. If you are not yet a customer, we hope this catalog will show you why so many Personal Protective Equipment Distributors consider us a trusted source for safety products that work.

For more information about our company, our products, and our knowledgeable sales team, please visit our website:

www.cordovaisc.com



1.800.458.8763
www.cordovaisc.com



Licensed Supplier of Stanley®
Hand Protection



Licensed Supplier of Dickies®
Hand Protection & Worker
Support Products

PERSONAL PROTECTIVE EQUIPMENT:

Safety Eyewear:

02

Eyewear Accessories:

13

Safety Vests:

14

Hi-Vis Shirts:

18

Hi-Vis Sweat Shirts:

20

Hi-Vis Jackets:

21

Rainwear:

22

Disposable Wear:

30

Respirators:

35

Boots:

36

Hearing Protection:

38

Head Protection:

39

Back Support Belts:

40

Safety Fencing & Barricade Tape:

40

HAND PROTECTION:

Detailed Product Listing:

41

High Performance Gloves:

42

Machine Knits:

49

Leather Gloves:

57

Supported Gloves:

83

Unsupported Gloves:

92

Disposable Gloves:

94

Cotton Gloves:

96



Aggressor™



E03S20
Gray with
Gun Metal Frame

FEATURES:

- Rugged Gun Metal Nylon Frame
- Modern Full-Sized Design
- Scratch Resistant Polycarbonate Lens
- Black Thermo-Plastic Temples & Nose Piece
- Meets ANSI Z87.1+ and CSA Z94.3 Standards
- Provides 99.9% UV Protection

E03S10

Clear

E03S10T

Clear/Anti-Fog



E03S50

Indoor-Outdoor
Lens



E03S65

Fusion Blue



E03S30

Amber



E03S95

Fusion Orange



Vendetta™



FEATURES:

- Shiny Black Nylon Frame
- Integrated Side Shields
- Scratch Resistant Polycarbonate Lens
- Black Thermo-Plastic Temples & Nose Piece
- Meets ANSI Z87.1 + and CSA Z94.3 Standards
- Provides 99.9% UV Protection

E02B65

Fusion Blue with Black Frame

E02B10

Clear

E02B10T

Clear/Anti-Fog



E02B30

Amber



E02B20

Gray



E02B50

Indoor-Outdoor



E02B95

Fusion Orange



FEATURES:

- Frameless Design with Black Nylon Temples
- One Piece Lens with Integrated Side Shields
- Scratch Resistant Polycarbonate Lens
- Black Thermo-Plastic Temples & Nose Piece
- Meets ANSI Z87.1 + and CSA Z94.3 Standards
- Provides 99.9% UV Protection

Opticor™



E01B30

Amber

E01B10

Clear

E01B10T

Clear/Anti-Fog



E01B50

Indoor-Outdoor



E01B90

Rainbow Mirror



E01B20

Gray



E01B60

Blue Mirror



Jackal™

**EGF20S**

Gray with Frosted Gray Frame

EGF20ST

Gray/Anti-Fog with Frosted Gray Frame

FEATURES:

- Single Wrap-Around Lens
- Soft Gel Nose Piece & Temples
- Light weight, Durable Design
- Scratch Resistant Polycarbonate Lens
- Meets ANSI Z87.1 + Standards
- Provides 99.9% UV Protection

EGF10SClear with Frosted
Clear Frame**EGF10ST**Clear/Anti-Fog
with Frosted
Clear Frame**EGF60S**Blue Mirror
with Frosted
Gray Frame**EGF15S**Light Blue
with Frosted
Blue Frame**EGF70S**Silver Mirror
with Frosted
Gray Frame**EGF50S**Indoor-Outdoor
with Frosted
Clear Frame**EGF50ST**

Indoor-Outdoor/Anti-Fog

**EGF95S**Orange
with Frosted
Orange Frame

DOBERMAN™

**ENB60S**

Blue Mirror with
Black Frame

FEATURES:

- Single Wrap-Around Lens
- Bayonet Temple Design
- Scratch Resistant Polycarbonate Lens
- Matching Soft Gel Nose Piece & Temples
- Meets ANSI Z87.1+ Standards
- Provides 99.9% UV Protection

ENB10S

Clear with
Black Frame

ENB10ST

Clear/Anti-Fog with
Black Frame

**ENB30S**

Amber with
Frosted Amber Frame

**ENF15S**

Light Blue with
Frosted Blue Frame

ENF15ST

Light Blue/Anti-Fog with
Frosted Blue Frame

**ENB50S**

Indoor-Outdoor with
Black Frame

ENB50ST

Indoor-Outdoor/Anti-Fog
with Black Frame

**ENB20S**

Gray with
Black Frame

ENB20ST

Gray/Anti-Fog with
Black Frame

**ENB70S**

Silver Mirror with
Black Frame



CATALYST™

EOB70S Silver Mirror

FEATURES:

- Shiny Black Nylon Frame
- Dual Wrap-Around Lens Design
- Scratch Resistant Polycarbonate Lens
- Bayonet Temple Design
- Thermo-Plastic Temples & Nose Piece
- Meets ANSI Z87.1 + Standards
- Provides 99.9% UV Protection

EOB10S

Clear

EOB10ST

Clear/Anti-Fog

**EOB50S**

Indoor-Outdoor

**EOB20S**

Gray

EOB20ST

Gray/Anti-Fog

**EOB60S**

Blue Mirror

**EOB30S**

Amber

**EOB90S**

Orange Mirror



DANE™



FEATURES:

- Single Wrap-Around Lens
- Bayonet Temple Design
- Scratch Resistant Polycarbonate Lens
- Integrated Nose Piece
- Meets ANSI Z87.1 + Standards
- Provides 99.9% UV Protection

EL155

Blue with
Frosted Blue Frame

EL15ST

Blue/Anti-Fog with
Frosted Blue Frame

EL10S

Clear with
Frosted Clear
Frame



EL50S

Indoor-
Outdoor with
Frosted Clear
Frame



EL70S

Silver
Mirror with
Black Frame



EL20S

Gray with
Frosted Gray
Frame



EL60S

Blue
Mirror with
Black Frame



EL80S

Rainbow
Mirror with
Black Frame



EL25S

Brown with
Frosted Brown
Frame



EL30S

Amber with
Frosted Amber
Lens



Style #	Lens	Frame
EL10S	Clear	Frosted Clear
EL10ST	Clear with Anti-Fog	Frosted Clear
EBL10S10	Clear with 1.0 Diopter	Frosted Clear
EBL10S15	Clear with 1.5 Diopter	Frosted Clear
EBL10S20	Clear with 2.0 Diopter	Frosted Clear
EBL10S25	Clear with 2.5 Diopter	Frosted Clear
EL15S	Light Blue	Frosted Blue
EL15ST	Light Blue with Anti-Fog	Frosted Blue
EL20S	Gray	Frosted Gray
EL20ST	Gray with Anti-Fog	Frosted Gray
EL25S	Brown	Frosted Brown
EL30S	Amber	Frosted Amber
EL50S	Indoor-Outdoor	Frosted Clear
EL60S	Blue Mirror	Black
EL70S	Silver Mirror	Black
EL80S	Rainbow Mirror	Black



Diopters Available in 1.0-2.5 Strengths

BULLDOG™



FEATURES:

- Single Wrap-Around Lens
- Spatula Temple Design
- Scratch Resistant Polycarbonate Lens
- Integrated Nose Piece
- Meets ANSI Z87.1 + Standards
- Provides 99.9% UV Protection

EHB60S

Blue Mirror with
Black Frame

BULLDOG
PUPS
(Smaller Sizes)

EHF10S

Clear with Frosted
Clear Frame

EHF10ST

Clear/Anti-Fog with
Frosted Clear Frame

EPHF10S

Clear Bulldog Pups™

EPHF10ST

Clear/Anti-Fog
Bulldog Pups™



EHB30S

Amber with
Frosted Amber
Frame



EHB50S

Indoor-Outdoor
with Black Frame

EPHB50S

Bulldog Pups™



EHF15S

Light Blue with
Frosted Blue Frame

EPHF15S

Bulldog Pups™



EHB70S

Silver Mirror with
Black Frame



EHB20S

Gray with
Black Frame

EHB20ST

Gray/Anti-Fog with
Black Frame

EPHB20S

Bulldog Pups™



EHB80S

Rainbow Mirror
with
Black Frame



BULLDOG

FRAMERS™



EHF10-FST

Clear/Anti-Fog with
Frosted Clear Frame

FEATURES:

- Soft Polyurethane Foam Seal
- Prevents debris from entering the eye area when working overhead
- Meets ANSI Z87.1+ Standards
- Provides 99.9% UV Protection

Style #	Lens	Frame
☐ EHF10-FST	Clear/Anti-Fog	Frosted Clear
☐ EHB20-FST	Gray/Anti-Fog	Black
☐ EHB50-FST	Indoor-Outdoor/Anti-Fog	Black

BULLDOG

READERS™



EHF10S10

Clear with
Frosted Clear Frame

Style #	Lens	Frame
☐ EHF10S10	Clear/1.0 Diopter	Frosted Clear
☐ EHF10S15	Clear/1.5 Diopter	Frosted Clear
☐ EHF10S20	Clear/2.0 Diopter	Frosted Clear
☐ EHF10S25	Clear/2.5 Diopter	Frosted Clear
☐ EHB20S10	Gray/1.0 Diopter	Black
☐ EHB20S15	Gray/1.5 Diopter	Black
☐ EHB20S20	Gray/2.0 Diopter	Black
☐ EHB20S25	Gray/2.5 Diopter	Black

FEATURES:

- Magnifying Lens Inserts
- Available in Four Strengths
- Meets ANSI Z87.1+ Standards
- Provides 99.9% UV Protection



BOXER™



FEATURES:

- Dual Wrap-Around Lens Design
- Extendable Temples
- Matte Black Nylon Frame
- Scratch Resistant Polycarbonate Lens
- Meets ANSI Z87.1+ Standards
- Provides 99.9% UV Protection

EKB15S

Blue with Matte
Black Frame

EKB20S

Gray

EKB20ST

Gray/Anti-Fog



EKB50S

Indoor-Outdoor



EKB10S

Clear

EKB10ST

Clear/Anti-Fog



EKB30S

Amber



EKB70S

Silver Mirror



AKITA™



FEATURES:

- Dual Wrap-Around Lens Design
- Extendable, Ratcheting Temples
- Matte Black Nylon Frame
- Scratch Resistant Polycarbonate Lens
- Meets ANSI Z87.1+ Standards
- Provides 99.9% UV Protection

EFB50S

Indoor-Outdoor with
Matte Black Frame



EFB10S

Clear



EFB20S

Gray

EFB30S

Amber



RETRIEVER™



FEATURES:

- Single Lens Design with Integrated Side Shields
- Nylon Frame with Browguard
- Extendable Temples
- Integrated Nose Piece
- Scratch Resistant Polycarbonate Lens
- Meets ANSI Z87.1+ Standards
- Provides 99.9% UV Protection

EJBIRUV5

Green 5.0 Filter
with Black Frame

EJB10S

Clear with
Black Frame



EJNWR20S

Gray with
Red, White & Blue



EJN10S

Clear with
Blue Frame



Style #	Lens	Frame
☐ EJB10S	Clear	Black
☐ EJB10ST	Clear/Anti-Fog	Black
☐ EJB20S	Gray	Black
🟢 EJBIRUV3	Green 3.0 Filter	Black
🟢 EJBIRUV5	Green 5.0 Filter	Black
☐ EJNWR10S	Clear	Red, White & Blue
☐ EJNWR10ST	Clear/Anti-Fog	Red, White & Blue
☐ EJNWR20S	Gray	Red, White & Blue
☐ EJR10S	Clear	Red
☐ EJN10S	Clear	Blue

RETRIEVER-II™



EMB20S

Gray with
Black Frame



Retriever II: Extendable
& Ratcheting Temples

Style #	Lens	Frame
☐ EMB10S	Clear	Black
☐ EMB20S	Gray	Black
☐ EMNWR10S	Clear	Red, White & Blue

SLAMMER™



FEATURES:

- Wrap-Around Style with Browguard
- Integrated/Vented Side Shields
- Designed to fit over prescription glasses
- Uncoated or Coated (Scratch Resistant)
- Jumbo Sizes Available
- Meets ANSI Z87.1+ Standards
- Provides 99.9% UV Protection

EC20S: Gray/Uncoated

EC20SH: Gray/Coated

EC20SX: Gray/Uncoated/Jumbo

EC10S: Clear/Uncoated

EC10SH: Clear/Coated

EC10SX: Clear/Uncoated/Jumbo



Goggles

FEATURES:

- Scratch Resistant Polycarbonate Lens
- Elastic Straps
- Perforated or Indirect Ventilation
- Meets ANSI Z87.1+ Standards
- Provides 99.9% UV Protection

GD10: Clear/Perforated

GD10T: Clear/Perforated/Anti-Fog

GI10: Clear/Indirect Ventilation

GI10T: Clear/Indirect Ventilation/Anti-Fog



DS-1™

DUST/SPLASH GOGGLES

FEATURES:

- Soft, Flexible, Compact Frame
- Indirect Ventilation System
- Adjustable Elastic Strap
- Scratch Resistant Polycarbonate Lens
- Meets ANSI Z87.1 + Standards
- Provides 99.9% UV Protection

GDS10

Clear with
Clear Frame

Style	Lens	Frame
GDS10	Clear	Clear
GDS10T	Clear/Anti-Fog	Clear
GDS20	Gray	Dark Gray
GDS20T	Gray/Anti-Fog	Dark Gray
GDS50T	Indoor/Outdoor Anti-Fog	Clear

ACCESSORIES



ED001

6-Unit
Eyewear Display
Glasses not included



EB001

Microfiber Eyeglass Bag with Drawstring
Functions as cleaning cloth and storage bag

Style	EC001	EC002	EB001
Aggressor™	X	X	X
Akita™	X	X	X
Boxer™	X	X	X
Bulldog™	X	—	X
Catalyst™	X	X	X
Citation™	X	X	X
Dane™	X	—	X
Doberman™	X	X	X
Opticor™	X	X	X
Retriever I & II™	X	X	X
Vendetta™	X	X	X

EC002

Black Nylon
Eyeglass
Cord with
Rubber Loops



EC001

Black Cotton
Eyeglass
Cord with
Rubber Slide



ANSI/ISEA CLASS III COR-BRITE™ HIGH VISIBILITY SAFETY VESTS



V3200 M-5XL
Class III



V3201 M-5XL
Class III

FEATURES:

- Class III: ANSI/ISEA 107-2010
- Orange or Lime Green Mesh Fabric
- Zipper Closure
- 2-inch Silver Reflective Tape on 4.5-inch Contrasting Background Tape
- Pockets: Two Inside Lower, Two Outside Chest, Two Outside Lower
- All Pockets include Velcro® Closures

Class 3 garments offer greater visibility to workers in complex backgrounds and through a full range of body movements. Visibility is enhanced beyond Class 2 by the addition of reflective materials to the arms.



V3001 M-5XL
Class III



V3000 M-5XL
Class III

FEATURES:

- Class III: ANSI/ISEA 107-2010
- Orange or Lime Green Mesh Fabric
- Zipper Closure
- 2-inch Silver Reflective Tape
- Pockets: Two Inside Lower, One Outside Lower, One Outside Chest with 4-Division Pen Pocket
- All Pockets include Velcro® Closures

CLASS II



VS291P

VS290P

VS290P/VS291P

FEATURES:

- Two-Tone Expandable Vest
- ANSI/ISEA Class II Compliant
- Contrasting Reflective Tape
- Multiple Pockets, Mic Tabs & Badge Holder
- Sizes : S/XL and 2XL/5XL



VS281

VS280

VS280/VS281 M-5XL

FEATURES:

- Surveyors Vest
- ANSI/ISEA Class II Compliant
- Solid Front Fabric & Mesh Back
- Zipper Closure
- Multiple Pockets for Pad/Pen, Radio/Phone & Flashlight
- Mic Tabs on each shoulder



V230PFR

V231PFR

V230PFR/V231PFR M-5XL

FEATURES:

- Limited FR Safety Vests (NFPA 701)
- ANSI/ISEA Class II Compliant
- Velcro® Closure
- 2-inch Silver Reflective Tape
- Orange or Lime Mesh Fabric
- Pockets : One Inside Lower, Outside Chest, Outside Lower
- 3-Division Pen Pocket & Mic Tab

CLASS II FR



VB221PFR

VB221PFR M-5XL

FEATURES:

- Limited FR Safety Vest (NFPA 701)
- ANSI/ISEA Class II Compliant
- 5-Point Breakaway Design
- Lime Mesh Fabric
- 2-inch Silver Reflective Tape

- Pockets: One Outside Lower, One Inside
- Chest Pocket with Velcro®

CLASS II



VS270P M-4XL
Class II

VZ251P M-5XL
Class II

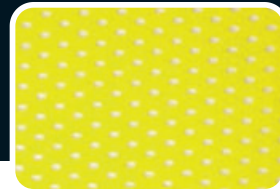


VZ250P M-5XL
Class II

VZ240P M-7XL
Class II



VZ241P M-7XL
Class II



VS271P M-4XL: Lime Green Mesh

VS270P / VS271P

FEATURES:

- Class II: ANSI/ISEA 107-2010
- Surveyors Style Vest
- Orange or Lime Green Mesh Fabric
- Zipper Closure
- 2-inch Silver Reflective Tape
- Pockets: Two Inside Lower, Two Outside Chest, Two Outside Lower
- Outside Pockets include Velcro® Closures

VZ250P/VZ251P

FEATURES:

- Class II: ANSI/ISEA 107-2010
- Orange or Lime Green Mesh Fabric
- Zipper Closure
- 2-inch Silver Reflective Tape on 4.5-inch Contrasting Tape
- Pockets: One Inside Lower

VZ240P/VZ241P

FEATURES:

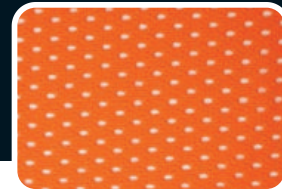
- Class II: ANSI/ISEA 107-2010
- Orange or Lime Green Mesh Fabric
- Zipper Closure
- Two horizontal 2" Silver Reflective Stripes
- Pockets: One Inside Lower

V241P M-5XL: Lime Green with Velcro® Closure

CLASS II



VB231P M-7XL
Class II



VB230P M-7XL: Orange Mesh

VB230P/VB231P

FEATURES:

- 5-Point Breakaway Design
- Class II: ANSI/ISEA 107-2010
- Orange or Lime Green Mesh Fabric
- Velcro® Closure
- 2-inch Silver Reflective Tape
- Pockets: One Outside Lower, One Inside Lower with Velcro®



V220 M-4XL
Class II

V221 M-7XL
Class II

V220/V221

FEATURES

- Class II: ANSI/ISEA 107-2010
- Orange or Lime Green Solid Fabric
- Velcro® Closure
- 2-inch Silver Reflective Tape
- No Pockets



V211P M-7XL
Class II

V210P M-7XL
Class II

V210P/V211P

FEATURES:

- Class II: ANSI/ISEA 107-2010
- Orange or Lime Green Mesh Fabric
- Velcro® Closure
- 2-inch Silver Reflective Tape
- No Pockets

NON-RATED VESTS

V120L/V121W

FEATURES:

- General Purpose, Non-Rated
- Orange or Lime Green Mesh Fabric
- Velcro® Closure
- 2-inch Silver Reflective Tape
- One Size Fits Most



V120L
Non-Rated

V121W
Non-Rated



V111W
Non-Rated

V110L
Non-Rated

V110L/V111W

FEATURES:

- General Purpose, Non-Rated
- Orange or Lime Green Mesh Fabric
- Velcro® Closure
- 1-inch Silver Reflective Tape
- One Size Fits Most



V100L/V101

FEATURES:

- General Purpose/Non-Rated
- Orange or Lime Green Mesh Fabric
- Velcro® Closure
- No Reflective Tape
- One Size Fits Most



V101
Non-Rated

V100
Non-Rated

COR-BRITE™ HI-VIS SHIRTS



V130M-5XL

V131M-5XL



V140M-5XL

V141M-5XL

V130/V131 M-5XL

FEATURES:

- Cor-Brite™ Non-Rated Short Sleeve Shirts
- Orange or Lime Birdseye Mesh Fabric
- Chest Pocket

V140/V141 M-5XL

FEATURES:

- Cor-Brite™ Non-Rated Long-Sleeve Shirts
- Orange or Lime Birdseye Mesh Fabric
- Chest Pocket



V410M-4XL

V411M-4XL

V511M-5XL



V510M-5XL

V410/V411

FEATURES:

- Cor-Brite™ Class II Short Sleeve Shirts
- Class II: ANSI/ISEA 107-2010
- Orange or Lime Birdseye Mesh Fabric
- 2-inch Silver Reflective Tape
- Chest Pocket

V510/V511 M-5XL

FEATURES:

- Cor-Brite™ Class III Long Sleeve Shirts
- Class III : ANSI/ISEA 107-2010
- Orange or Lime Birdseye Mesh Fabric
- 2-inch Silver Reflective Tape
- Chest Pocket

COR-BRITE™ SWEAT SHIRTS



SJ401

SJ400

SJ400/SJ401 M-5XL

FEATURES:

- Cor-Brite™ Hooded Sweat Shirts
- Class III : ANSI/ISEA 107-2010
- Orange 300 gram Polyester Fleece Fabric
- Birdseye Polyester Lined Hood
- Zipper Closure & Black Pouch Pockets

SS101/SS100 M-5XL

FEATURES:

- Cor-Brite™ Crew Neck Sweat Shirts
- Class III : ANSI / ISEA 107-2010
- Lime 300 gram Polyester Fleece Fabric
- Pullover with Black Pouch Pocket

SS100



SS101

- Class III: ANSI/ISEA 107-2010
- PU Coated 300 Denier Polyester Shells
- 2-Inch Reflective Tape
- Mic Tabs on Shoulders

BOMBER JACKETS



J200

J200 M-5XL

Reptyle™ 2-in-1 Bomber Jacket

- Zip-Out Fleece Lining
- Concealed, Detachable Hood
- Elastic Waist & Wrists
- Pockets: 2 Outside Slash Pockets, Cell Phone Pocket, 2 Inside Fleece Pockets, 2 Left Sleeve Pencil Pockets

J201 M-5XL (Lime)



J301

J301 M-5XL

Reptyle™ 3-in-1 Bomber Jacket

- Zip-Out Fleece Jacket
- Concealed, Detachable Hood
- Elastic Waist
- Velcro Wrist Closures



**J301 ZIP-OUT FLEECE JACKET
CAN BE WORN SEPARATELY**

- Pockets: 2 Outside Slash Pockets, Cell Phone Pocket, Lined Chest Pocket, 3 Outside Fleece Jacket Pockets, Clear Chest Badge Holder, 2 Left Sleeve Pencil Pockets

J300 M-5XL (Orange)



SOFTSHELL JACKET

J100 M-5XL

Reptyle™ Softshell Jacket

- Class III : ANSI/ISEA 107-2010
- Three Layer Engineered Fabric
- Breathable, Wind Resistant
- Water Resistant

- TPR Wrist Take-Ups
- Drawstring Waist with Toggle Adjustment
- Made with 3M™ Scotchlite™ Reflective Material

★ ★ ★ ★ ★ COMMANDER™ FR™ TOUGH NEOPRENE RAINWEAR

- Yellow, .35 mm. Neoprene/Nylon Fabric
- Dependable Protection against abrasions, snags & chemicals
- Resists cracking and peeling under the harshest conditions
- Flame Resistant: ASTM D6413
- Protects against Oils, Acids, Alcohols, Detergents and Solvents

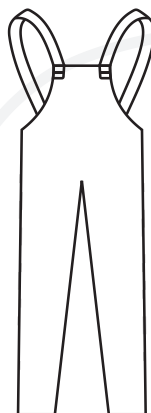
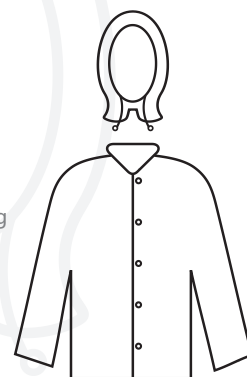


RN1810

Commander™ 2-Piece Rain Jacket

Features:

- .35 mm. Neoprene/Nylon Fabric
- Flame Resistant: ASTM D6413
- Detachable Hood with Drawstring
- Corduroy Collar
- Storm Fly Front with Zipper/Snap Buttons
- Available in Sizes M-5XL



RN1820

Commander™ Rain Pants

Features:

- .35 mm. Neoprene/Nylon Fabric
- Flame Resistant: ASTM D6413
- Bib Style without Fly
- Take-Up Snaps at Waist & Ankles
- Available in Sizes M-5XL

RAINWEAR SIZING CHART

NUMERICAL SIZE	RAINWEAR SIZE
34-36	Small
38-40	Medium
42-44	Large
46-48	X-Large
50-52	2X-Large
54-56	3X-Large
58-60	4X-Large
62-64	5X-Large
66-68	6X-Large
70-72	7X-Large

- Yellow, .28 mm. PVC/Nylon/PVC Fabric
- Flame Resistant: ASTM D6413
- Resists Oils, Caustics, Fats & Alcohols
- Ideal for Chemical Processing, Oil Refining, Natural Gas & Metal Fabrication

DEFIANCE[™] FR[™]

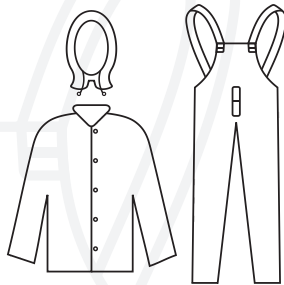
FLAME RESISTANT RAINWEAR

R8023FR

Defiance[™] FR 3-Piece Rain Suit

Features:

- Detachable Hood with Drawstring
- Storm-Fly Front with Snap Buttons
- Bib-Style Pants with Suspenders & Snap Fly
- Available in Sizes S-5XL

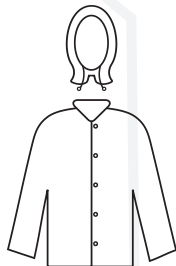


R8022FRJ

Defiance[™] FR 2-Piece Rain Jacket

Features:

- Detachable Hood with Drawstring
- Storm-Fly Front with Snap Buttons
- Available in Sizes S-5XL

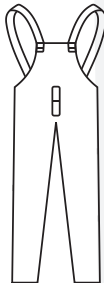


R8021FRBP

Defiance[™] FR Rain Pants

Features:

- Bib-Style Pants with Suspenders & Snap Fly
- Available in Sizes S-5XL

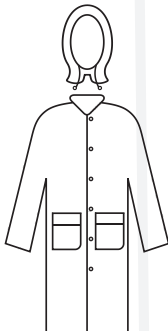


R8022FRC

Defiance[™] FR 2-Piece Rain Coat

Features:

- 49-inch Length
- Detachable Hood with Drawstring
- Storm-Fly Front with Snap Buttons
- Two Flapped Pockets
- Available in Sizes S-5XL



R8622FRC

Defiance[™] FR 2-Piece Rain Coat

Features:

- 60-inch Length
- Detachable Hood with Drawstring
- Storm-Fly Front with Snap Buttons
- One Flapped Pocket
- Available in Sizes M-3XL

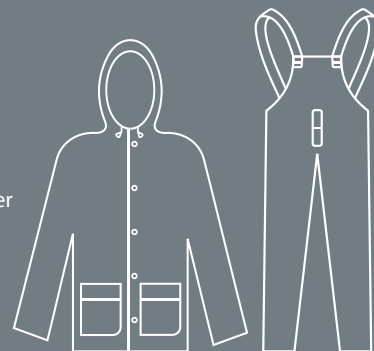


STORMFRONT™

RS352Y

Stormfront™ 2-Piece Rain Suit

- Yellow, .35 mm. PVC/Polyester Fabric
- Attached Hood
- Available in Sizes S-3XL

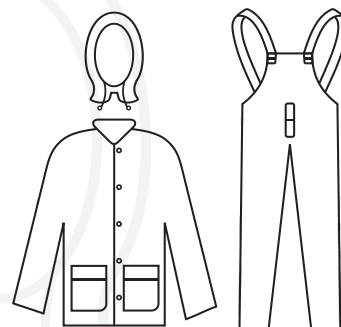


RS353Y

Stormfront™ 3-Piece Rain Suit

Features:

- .35 mm. PVC/Polyester Fabric
- Detachable Hood
- Corduroy Collar
- Ventilated Cape Back & Underarms
- Two Flapped Pockets
- Storm Fly Front with Zipper/Snap Buttons
- Available in Sizes S-7XL

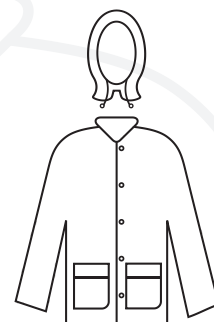


RJ352Y

Stormfront™ 2-Piece Rain Jacket

Features:

- .35 mm. PVC/Polyester Fabric
- Detachable Hood
- Corduroy Collar
- Ventilated Cape Back & Underarms
- Two Flapped Pockets
- Storm Fly Front with Zipper/Snap Buttons
- Available in Sizes S-4XL



RJH35Y

StormFront™ 1-Piece Rain Jacket with attached Hood

- Available in Sizes S-3XL

RWP35Y

Stormfront™ Rain Pants

Features:

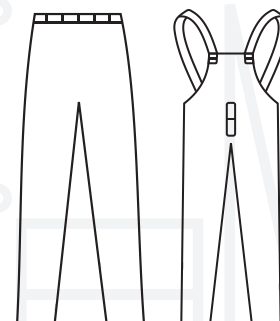
- Elastic Waist without Fly
- .35 mm. PVC/Polyester Fabric
- Available in Sizes S-4XL

RB35Y

Stormfront™ Rain Pants

Features:

- Bib-Style Pants with Suspenders
- .35 mm. PVC/Polyester Fabric
- Snap Fly
- Available in Sizes S-3XL



STORMFRONTTM HV

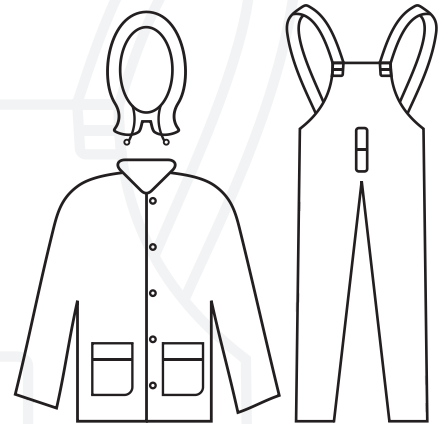
HIGH VISIBILITY

R9013HV

Stormfront HVTM 3-Piece Rain Suit

Features:

- High Visibility Green Color
- .35 mm. PVC/Polyester Fabric
- Detachable Hood with Drawstring
- Corduroy Collar
- Ventilated Cape Back & Underarms
- Two Flapped Pockets
- Storm Fly Front with Zipper/Snap Buttons
- Bib-Style Pants with Suspenders & Snap Fly
- Available in Sizes S-5XL



STORMFRONTTM FR

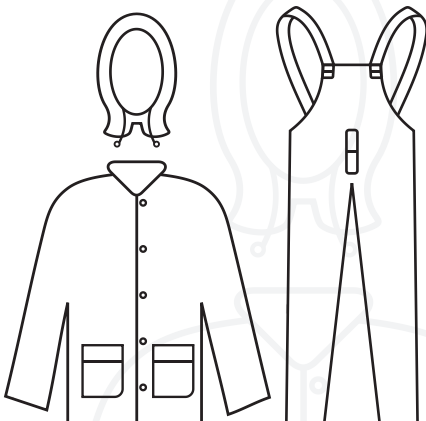
FLAME RESISTANT

R9023FR

Stormfront FRTM 3-Piece Rain Suit

Features:

- Flame Resistant: ASTM D6413
- Yellow Color
- .35 mm. PVC/Polyester Fabric
- Detachable Hood with Drawstring
- Ventilated Cape Back & Underarms
- Two Flapped Pockets
- Storm Fly Front with Zipper/Snap Buttons
- Bib-Style Pants with Suspenders & Snap Fly
- Available in Sizes S-7XL



RIPTIDE™

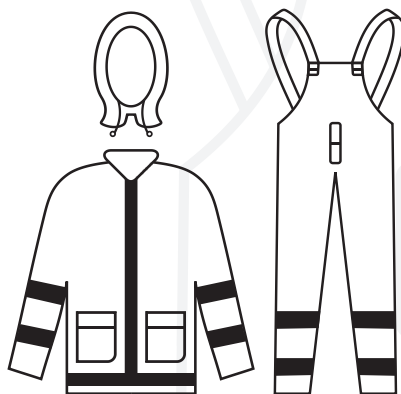
- .35 mm. PVC/Polyester Fabric
- 2-inch Silver Reflective Stripes around arms, legs, waist and front of Jacket
- Ideal for Shipping Industry, Refineries, Utilities & Sanitation

HV353G

Riptide 3-Piece Rain Suit

Features:

- High Visibility Lime Green Color
- Silver Reflective Stripes
- .35 mm. PVC/Polyester Fabric
- Detachable Hood with Drawstring
- Corduroy Collar
- Ventilated Underarms
- Two Flapped Pockets
- Storm Fly Front with Zipper/Snap Buttons
- Bib-Style Pants with Suspenders and Snap Fly
- Available in Sizes S-6XL

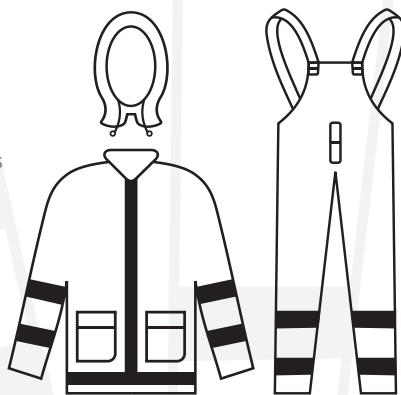


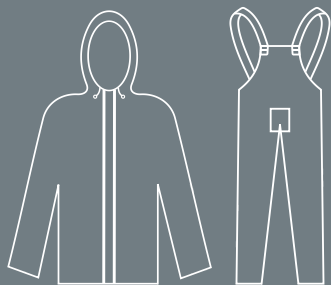
HV353Y

Riptide 3-Piece Rain Suit

Features:

- High Visibility Yellow Color
- Silver Reflective Stripes
- .35 mm. PVC/Polyester Fabric
- Detachable Hood with Drawstring
- Corduroy Collar
- Ventilated Cape Back & Underarms
- Two Flapped Pockets
- Storm Fly Front with Zipper/Snap Buttons
- Bib-Style Pants with Suspenders and Snap Fly
- Available in Sizes S-6XL





**Permeation Data Available for
98% Sulfuric Acid**

RS452G

Apex™ 2-Piece Chemical Suit

Features:

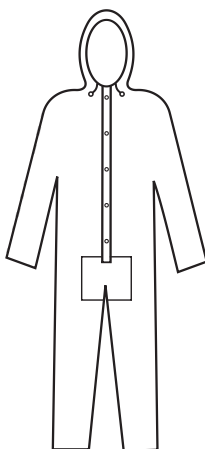
- Green, .45 mm. PVC/Nylon/PVC Fabric
- Flame Resistant: ASTM D6413
- Attached Hood with Drawstring
- Storm Fly Front with Zipper
- Inner Sleeves with Elastic Wrist Closure
- Bib-Style Pants with Suspenders
- Available in Sizes M-7XL

APEX FR™

RAINWEAR



RS452G



RS45G

Apex™ 1-Piece Chemical Coverall

- Same Features as above, but 1-Piece Design
- Available in Sizes M-6XL



RS45G



RSHB352Y

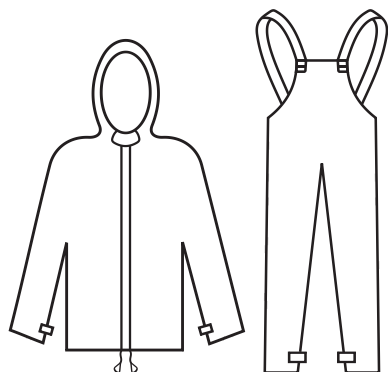
JETSTREAM™

RSHB352Y

Jetstream™ 2-Piece Hydroblast Suit

Features:

- Yellow, .30 mm. PVC/Polyester/PVC Fabric
- Attached Hood
- Storm Fly Front with Snap Buttons & Velcro®
- Velcro® Closures at All Openings
- Bib-Style Pants with Suspenders
- Available in Sizes M-7XL



RENEGADE

Raincoats

RC35B

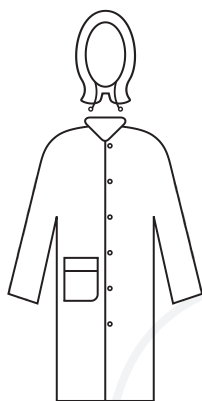
Renegade™ Black 2-Piece Rain Coat

Features:

- .35 mm. PVC/Polyester Fabric
- 49-inch Length
- Detachable Hood with Drawstring
- Corduroy Collar
- Storm Fly Front with Snap Buttons
- Two Flapped Pockets
- Ventilated Cape Back & Underarms
- Available in Sizes S-5XL



RC35B60



RC35Y

Renegade™ Yellow 2-Piece Rain Coat

- Same Features / Sizes as above



RC35Y

RC35B60

Renegade™ Black 2-Piece Rain Coat

Features:

- .35 mm. PVC/Polyester Fabric
- Riding Coat Style with Leg Straps
- 60-inch Length for Full Body Protection
- Detachable Hood with Drawstring
- Corduroy Collar
- Storm Fly Front with Snap Buttons
- One Flapped Pocket
- Ventilated Cape Back & Underarms
- Available in Sizes S-5XL

RC35Y60

Renegade™ Yellow 2-Piece Rain Coat

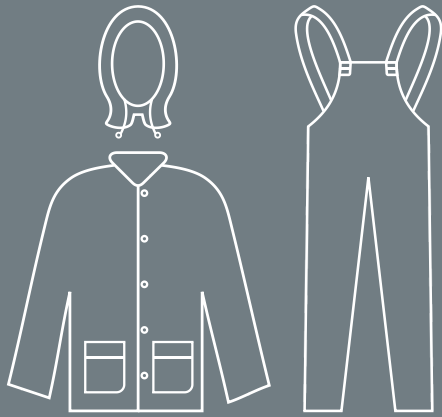
- Same Features as above
- Available in Sizes S-3XL

R9632FRC

Renegade FR™ Black 2-Piece Rain Coat

Features:

- Same Features as above
- Flame Resistant: ASTM D6413
- Available in Sizes M-5XL



STRATUS™

R9123Y

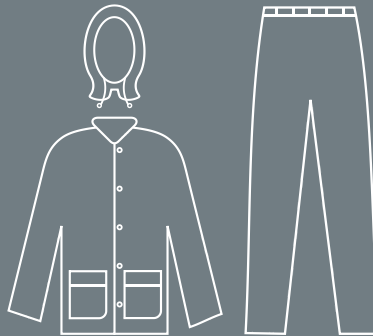
Stratus™ 3-Piece Rain Suit

Features:

- Yellow, .30 mm. PVC/Polyester Fabric
- Detachable Hood with Drawstring
- Snap Buttons
- Bib-Style Pants with Suspenders
- Available in Sizes S-7XL



RS103Y



RS103Y

Value Line™ 3-Piece Rain Suit

Features:

- .10 mm. Single-Ply PVC Fabric
- Detachable Hood with Drawstring
- Open Front with Snap Buttons
- Two Flapped Pockets
- Pants with Elastic Waist
- Available in Sizes S-4XL

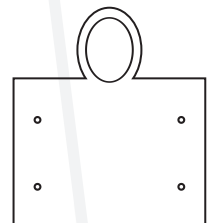


RP10

Value Line™ Rain Poncho

Features:

- .10 mm. Single-Ply PVC Fabric
- Attached Hood with Drawstring
- Snap Buttons at Sides
- Dimensions: 52-inches x 80-inches
- Available in Yellow, Orange, Navy Blue & Clear
- One Size Fits Most



Defender™ Protective Clothing is constructed of tough, composite fabric that combines breathable Microporous Film and soft Non-Woven Polyolefin. Defender™ Protective Clothing provides an effective barrier against particulates, aerosols and liquids while maintaining wearer comfort. All styles feature Serged Seams and Reinforced High-Stress Areas.



DEFENDER™ PROTECTIVE CLOTHING

LIGHTWEIGHT, DURABLE, BREATHABLE, AFFORDABLE

DEFENDER™: PREMIUM MICROPOROUS CLOTHING



CP

Defender™ Microporous Coverall with Zipper Front & Collar, Open Wrists & Ankles, No Hood, No Boots, Case Pack: 25 each **Sizes: M-5XL**

CPE

Defender™ Microporous Coverall with Zipper Front & Collar, Elastic Wrists & Ankles, No Hood, No Boots, Case Pack: 25 each **Sizes: M-5XL**

CPH

Defender™ Microporous Coverall with Hood, Zipper Front, Elastic at Hood, Wrists & Ankles, No Boots, Case Pack: 25 each **Sizes: M-5XL**

CPHB

Defender™ Microporous Coverall with Hood & Boots, Zipper Front, Elastic at Hood, Wrists & Ankles, Case Pack: 25 each **Sizes: M-5XL**

FRC150

Defender FR™ Limited FR Coverall, NFPA 701, Blue, Elastic Wrists & Back Case Pack: 25 each **Sizes: L-5XL**

FRC400

Defender FR™ Limited FR Coverall, NFPA 701, Blue, Elastic Wrists & Back Hood and Boots, Case Pack: 25 each **Sizes: L-5XL**

CPS18

Defender™ Microporous Sleeve, 18-inch length, Elastic at both ends, Case Pack: 200 each

One Size Fits All

CPA28

Defender™ Microporous Apron, 28-inch x 46-inch, Bib-Style, Bound Neck & Ties, Case Pack: 100 each **One Size Fits All**



CPS18



FRC400



Applications:

Agriculture, Lead Remediation, Asbestos Abatement, Spray Painting, Food Processing, Sanitation Engineering, Inspection, Pharmaceutical Manufacturing.

DEFENDER II™: STANDARD MICROPOROUS CLOTHING

Style #	Description	Sizes	Case Pack
MP100	Coverall: Zipper & Collar, Elastic Waist	M-5XL	25
MP200	Coverall: Zipper & Collar, Elastic Waist/Wrists/Ankles	M-5XL	25
MP300	Coverall: Zipper, Elastic Waist/Wrists/Ankles, Hood	M-5XL	25
MP400	Coverall: Zipper, Elastic Waist/Wrists, Hood & Boots	M-5XL	25
MPL100	Lab Coat: Snap Front & Collar, No Elastic	M-3XL	30
MPL200	Lab Coat: Snap Front & Collar, Three Pockets	S-3XL	30
MPA100	Apron: Attached Neck Ties, 28-inch x 36-inch	One Size Fits All	100
MPS100	Sleeve: 18-inch, Elastic at both ends	One Size Fits All	200
MPSCL	Shoe Cover: Elastic Closure	One Size Fits All	200

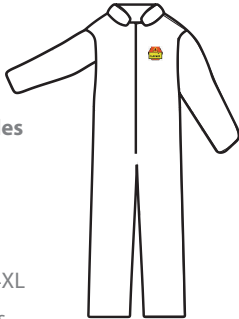
Cordova Safety C-MAX™ Coveralls are made with durable, yet breathable SMS fabric. SMS is composed of three layers of Polypropylene material. One layer of Melt blown Polypropylene is sandwiched between two layers of Spunbonded Polypropylene. This unique fabric configuration gives our C-MAX™ Coveralls outstanding abrasion resistance and protection from non-hazardous liquids and particulates.



SMS100

White Coverall with Open Wrists and Ankles

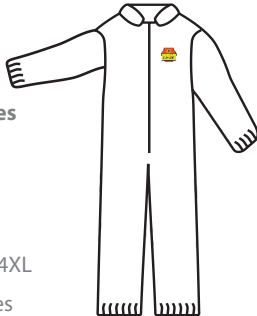
- Serged Seams
- Zipper Closure
- Elastic Waist
- Available Sizes: M-4XL
- Case Pack: 25 Pieces



SMS200

White Coverall with Elastic Wrists & Ankles

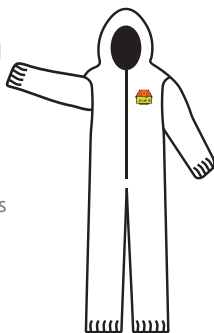
- Serged Seams
- Zipper Closure
- Elastic Waist
- Available Sizes: M-4XL
- Case Pack: 25 Pieces



SMS300

White Coverall with Hood

- Serged Seams
- Zipper Closure
- Elastic Waist
- Elastic Wrists and Ankles
- Attached Hood
- Available Sizes: M-5XL
- Case Pack: 25 Pieces



Applications:

- Asbestos Abatement
- Food Processing
- Painting
- Tank Cleaning
- Mold Remediation

SMS400

White Coverall with Hood & Boots

- Serged Seams
- Zipper Closure
- Elastic Waist
- Elastic Wrists and Ankles
- Attached Hood and Boots
- Available Sizes: M-5XL
- Case Pack: 25 Pieces



SMS900

Blue Coverall with Elastic Wrists & Ankles

- Serged Seams
- Zipper Closure
- Elastic Waist
- Available Sizes: M-4XL
- Case Pack: 25 Pieces



SMS910

Blue Coverall with Hood & Boots

- Serged Seams
- Zipper Closure
- Elastic Waist
- Elastic Wrists and Ankles
- Attached Hood and Boots
- Available Sizes: M-4XL
- Case Pack: 25 Pieces



POLYPROPYLENE

Coveralls

CO35

- Standard Weight Fabric
- Collar with Zipper Front
- Elastic Wrists & Ankles
- Available Sizes: S-4XL

COHB35

- Standard Weight Fabric
- Zipper Front
- Elastic Wrists
- Attached Hood & Boots
- Available Sizes: L-4XL

COE

- Economy Weight Fabric
- Collar with Zipper Front
- Elastic Wrists & Ankles
- Available Sizes: L-3XL

COEH

- Economy Weight Fabric
- Zipper Front
- Elastic Wrists & Ankles
- Attached Hood
- Available Sizes: L-4XL

COEHB

- Economy Weight Fabric
- Zipper Front
- Elastic Wrists
- Attached Hood & Boots
- Available Sizes: L-3XL

COHB55

- Heavy Weight Fabric
- Elastic Wrists
- Attached Hood & Boots
- Available Sizes: L-4XL

CO55

- Heavy Weight Fabric
- Collar with Zipper Front
- Elastic Wrists & Ankles
- Available Sizes: L-4XL

Lab Coats

LC55

- Heavy Weight Fabric
- Collar & Snap Button Front
- One Chest Pocket & Two Side Pockets
- Open Cuff
- Available in Sizes S-4XL

LC55EP

- Heavy Weight Fabric
- Collar & Snap Button Front
- Two Side Pockets
- One Chest Pocket
- Elastic at Wrists
- Available Sizes: L-4XL

Sleeves

Defender II™

- Microporous Sleeves
- See Page 30

CO35

LC55

APRONS & SLEEVES



RA06C48

Vinyl Aprons

RA06C48

- 6 mil, Clear Vinyl Apron
- Tied Strings & Sewn Edges
- Dimensions: 36-inches x 48-inches
- **RA06B48:** Same in Blue



RA06B51

RA35Y



RA08C48

- 8-mil, Clear Vinyl Apron
- Tied Strings & Sewn Edges
- Dimensions: 36-inches x 48-inches
- **RA08B48:** Same in Blue

RA06B51

- 6-mil, Blue Vinyl Apron
- Dye Cut Edges
- Dimensions: 36-inches x 51-inches

RA35Y

- .35 mm. PVC/Polyester Apron
- Attached Ties
- Dimensions: 35-inches x 47-inches

Vinyl Sleeves

RS06C

- 6 mil, Clear Vinyl Sleeves
- 18-inch Length

RS06B: Same in Blue

RS08C

- 8-mil, Clear Vinyl Sleeves
- 18-inch Length

RS08B: Same in Blue

Denim Aprons & Sleeves

DA0:

 Denim Apron

- Grommets
- Dimensions: 28-inches x 36-inches

DA1:

 Denim Apron

- Grommets
- One Chest Pocket
- Dimensions: 28-inches x 36-inches

DA2:

 Denim Apron

- Grommets
- Two Pockets
- Dimensions: 28-inches x 36-inches

DA2T:

 Denim Apron

- Sewn-In Ties
- Two Pockets
- Dimensions: 28-inches x 36-inches

DS18:

 Denim Sleeves

- Elastic at Both Ends
- 18-inch Length



DA1

Polyethylene Aprons & Sleeves

PA2846

- White Polyethylene Apron
- Die Cut
- Individually Bagged
- Dimensions: 28-inches x 46-inches

PS18W

- White Polyethylene Sleeves
- 18-inch Length

PS18B: Same in Blue

PS18C: Same in Clear

Defender II™

- Microporous Aprons
- See Page 30

PA2846



HAIR, BEARD & SHOE COVERS



Polypropylene Bouffant Caps

- Sizes: 19-28 inches
- Available Colors: White, Blue, Green, Red & Yellow
- Case Packs: 500 & 1000 Each



Nylon Hair Nets

- Sizes: 19-30 inches
- Available Colors: White, Brown & Blue
- Case Packs: 1000 Each

Style	Description	Available Colors
HN19W/10	White, 19-inch	White, Brown & Blue
HN21W/10	White, 21-inch	White, Brown & Blue
HN24W/10	White, 24-inch	White, Brown & Blue
HN26W/10	White, 26-inch	White Only
HN28W/10	White, 28-inch	White Only
HN30W/10	White, 30-inch	White Only



Beard Covers

- BR1/10:** Polypropylene Beard Cover
Case Pack: 1000 Each
- BR1/5:** Polypropylene Beard Covers
Case Pack: 500 Each
- BN/10:** Nylon Beard Covers
Case Pack: 1000 Each

Style	Description	Case Pack
BC19W	White, 19-inch	500 Each
BC19W/10	White, 19-inch	1000 Each
PBC19W/10	White, 19-inch, Pleated Latex Free	1000 Each
BC21W	White, 21-inch	500 Each
BC21W/10	White, 21-inch	1000 Each
PBC21W/10	White, 21-inch, Pleated Latex Free	1000 Each
PBC21B/10	Blue, 21-inch, Pleated Latex Free	1000 Each
BC24W	White, 24-inch	500 Each
BC24W/10	White, 24-inch	1000 Each
PBC24W/10	White, 24-inch, Pleated Latex Free	1000 Each
PBC24B/10	Blue, 24-inch, Pleated Latex Free	1000 Each
BC26W	White, 26-inch	500 Each
BC28W	White, 28-inch	500 Each



Shoe Covers

- SC40**
- Blue Polypropylene Shoe Covers
 - Non-Skid, Latex Coated Soles
 - Sizes L-2XL
 - Case Pack: 400 Each

Defender II™

- Microporous Shoe Covers
- See Page 30



NX95V

Class N95

Valved Particulate Respirator

- NIOSH Approved
- Two Latex-Free Straps
- Adjustable Aluminum Nose Piece
- Polyethylene Nose Pad
- 10/Box, 12 Boxes/Case



NX95

Class N95

Particulate Respirator

- NIOSH Approved
- Two Latex-Free Straps
- Adjustable Aluminum Nose Piece
- Polyethylene Nose Pad
- 20/Box, 12 Boxes/Case



NXF95

Class N95

Flat-Folded Particulate Respirator

- NIOSH Approved
- Continuous-Loop, Latex-Free Strap
- Adjustable Encapsulated Wire Band
- 20/Box, 12 Boxes/Case



NXF95V

Class N95

Flat-Folded, Valved Respirator

- NIOSH Approved
- Continuous-Loop, Latex-Free Strap
- Adjustable Encapsulated Wire Band
- 20/Box, 12 Boxes/Case



NIOSH Approved N95 Respirators provide a minimum of 95% filtration efficiency against solid and liquid aerosols that do not contain oil. Examples: China Clay, Cement, Cellulose, Sulfur, Cotton, Flour, Carbon, Ferrous Metals, Saw Dust, Coal, Iron Ore, Aluminum, Bacteria and Mycobacterium Tuberculosis (T.B.).



CDM2

Nuisance/Dust Mask

- Not NIOSH Approved
- One Elastic Strap
- Adjustable Aluminum Nose Piece
- 50/Box, 20 Boxes/Case

RUBBER BOOTS

- Heavy Duty, Ozone Resistant Rubber
- Tough, Ribbed Soles for Traction
- Protect Against Acids, Alcohols and most Water-Based Chemicals
- Snag, Cut and Abrasion Resistant
- Component Materials meet All Federal Regulations for Food Contact Applications



BYS17: Slush Boots

- Cotton Lined with Black Ribbed Sole
- High Visibility Yellow Upper
- 17-inch, Over-Shoe Style
- Top Strap & Buckle Adjustment
- Available in Sizes 6-18



BB5B: Five Buckle Boots

- Brick Red Ribbed Soles
- Cotton Lined
- Black upper to conceal dirt/grime
- 14-inch, Over-Shoe Style
- Self-Draining Gussets
- 5 Adjustable Rust Resistant Buckles
- Available in Sizes 7-16



BST: Steel Toe/Steel Shank Boots

- Cotton Lined with Black Ribbed Sole
- Black Upper to conceal dirt/grime
- 16-inch Length
- Steel Toe & Steel Shank
- Available in Sizes 6-15

BH: Hip Boots

- Cotton Lined with Black Ribbed Soles
- Attached Belt Loops & Thigh Adjustment Straps
- 32-Inch Length
- Plain-Toe Design
- Available in Sizes 8-13

BHS: Hip Boots with Steel Toe & Shank

- Same Features as above
- Available in Sizes 6-13



BB16: Over the Sock Boots

- Cotton Lined with Brick Red Ribbed Soles
- Black Upper to conceal dirt/grime
- 16-inch Length
- Plain Toe Design
- Available in Sizes 7-14

- Resist Solvents, Animal Fats, Light Acids, Alcohols and Oil-Based Chemicals
- Cut-off Bands for Height Adjustment
- Punch-Out Holes for Easy Hanging
- Kick-off Spurs for Quick Removal
- Component Materials meet All Federal Regulations for Food Contact Applications
- All Styles Feature EVA Insoles

PVC BOOTS



PB22

- Poly/Cotton Lined with Black PVC Sole
- Black PVC Upper, EVA Insole
- 16-inch Length
- Steel Toe meets ASTM 2413-05
- Available in Sizes 6-13

PB23

- Unlined/Black Sole/Plain Toe, EVA Insole
- Applications: Agriculture, Petrochemical Industry, Utilities & Water Treatment



PB33

- Poly/Cotton Lined with Black PVC/Nitrile Sole
- Banana Yellow PVC/Nitrile Upper, EVA Insole
- 16-inch Length
- Available in sizes 6-13
- Steel Toe & Mid-sole meet/exceed ASTM & CSA Standards
- Applications: Mining, Construction, Degreasing Operations & Recycling



Encore™

HEARING PROTECTION

Cordova's Encore™ Ear Plugs are constructed of soft, comfortable Foam Polyurethane that expands to fit snugly within the ear canal. The tapered design allows for easy insertion/removal and the bright orange color makes compliance checks easy. Encore™ Foam Polyurethane Ear Plugs are produced in an ISO 9001: 2000 Certified Facility to assure consistent quality and performance. All Encore™ Hearing Protection is tested in accordance with ANSI S3.19-1974 and European Standard EN 352-2:2002.

EPFU01

- Noise Reduction Rating: 32 Decibels
- Orange Foam Polyurethane Ear Plugs
- One Pair Per Polybag
- 200 Pairs Per Dispenser
- 10 Dispensers Per Master Carton
- 2000 Pairs Per Master Carton



EPFC01

- Noise Reduction Rating: 32 Decibels
- Corded Orange Foam Polyurethane Ear Plugs
- One Pair Per Polybag
- 100 Pairs Per Dispenser
- 20 Dispensers Per Master Carton
- 2000 Pairs Per Master Carton



DUO SAFETY™ HELMETS

DUO Helmets can be easily customized with high quality, permanent pad-printed logos.

- Low Minimums
- Quick Turnaround Times
- Competitive Pricing

- High Density Polyethylene Construction
- Meets ANSI/ISEA Z89.1-2009, Class E & G
- Sleek, Low-Profile Design
- Cap Style and Full-Brim Models
- Pinlock & Ratchet Suspensions
- Made in USA



DUO CAP STYLE 6-POINT NYLON SUSPENSION

Style #	Color	Suspension Type
H26S1	White	6-Pt. Pinlock
H26S2	Yellow	6-Pt. Pinlock
H26S3	Orange	6-Pt. Pinlock
H26S4	Red	6-Pt. Pinlock
H26S5	Blue	6-Pt. Pinlock
H26R1	White	6-Pt. Ratchet
H26R2	Yellow	6-Pt. Ratchet
H26R3	Orange	6-Pt. Ratchet
H26R4	Red	6-Pt. Ratchet
H26R5	Blue	6-Pt. Ratchet
H26R6	Hi-Vis Green	6-Pt. Ratchet
H26R7	Black	6-Pt. Ratchet
H26R8	Hi-Vis Orange	6-Pt. Ratchet
H26R9	Forest Green	6-Pt. Ratchet
H26R10	Dove Gray	6-Pt. Ratchet



DUO FULL-BRIM STYLE 4 & 6-POINT NYLON SUSPENSIONS

Style #	Color	Suspension Type
H34S1	White	4-Pt. Pinlock
H34S2	Yellow	4-Pt. Pinlock
H34R1	White	4-Pt. Ratchet
H34R2	Yellow	4-Pt. Ratchet
H34R3	Orange	4-Pt. Ratchet
H34R4	Red	4-Pt. Ratchet
H34R5	Blue	4-Pt. Ratchet
H34R6	Hi-Vis Green	4-Pt. Ratchet
H34R9	Forest Green	4-Pt. Ratchet
H36S1	White	6-Pt. Pinlock
H36S2	Yellow	6-Pt. Pinlock
H36R1	White	6-Pt. Ratchet
H36R2	Yellow	6-Pt. Ratchet
H36R6	Hi-Vis Green	6-Pt. Ratchet



BUMP CAPS 4-POINT PLASTIC SUSPENSION

Style #	Color	Suspension Type
HBC1	White	Pinlock
HBC2	Yellow	Pinlock
HBC4	Red	Pinlock
HBC5	Blue	Pinlock



Bump Caps are not designed to meet ANSI Standards. For Low-Risk Environments Only.

Back Support Belts

SB

- Smooth Glide Adjustable Clips
- Tapered Abdominal Support Panels
- Quick Adjust Elastic Outer Panels for Added Lower Back Support
- 1.25-inch Extra Wide Elastic Suspenders
- Sizes: S-3XL

BSB01:

- Same as above with



Safety Fencing

- Orange Polypropylene Construction
- Chemical and UV Resistant
- Remains Flexible in Severe Conditions
- Oval & Rectangular Patterns

Style	Weight	Pattern	Roll Size
SF1201	10.0 lbs.	Oval	4 Feet x 100 Feet
SF1605	6.50 lbs.	Oval	4 Feet x 50 Feet
SF2001	16.5 lbs.	Rectangular	4 Feet x 100 Feet
SF2005	8.25 lbs.	Rectangular	4 Feet x 50 Feet

CAUTION CAUTION CAUTION CAUTION CAUTION



Barricade Tape

- High Tensile Strength
- UV Resistant
- Non-Toxic, Lead Free
- Non-Flammable
- Remains Flexible in Cold Temperatures
- 1000 Feet/Roll
- Bi-lingual Legends Available

Style	Legends	Thickness (mils)
T15101	CAUTION	1.5, 2.0, 2.5, 3.0 & 4.0
T15102	CAUTION DO NOT ENTER	1.5, 2.0, 2.5, 3.0 & 4.0
T20103	CAUTION/CUIDADO	2.0
T15211	DANGER	1.5, 2.0, 2.5, 3.0 & 4.0
T15212	DANGER DO NOT ENTER	1.5, 2.0, 2.5, 3.0 & 4.0
T20213	DANGER/PELIGRO	2.0

DANGER DANGER DANGER DANGER DANGER

HIGH PERFORMANCE	TAEKI5®	42-43
	UHMWPE	44-45
	KEVLAR® & KEVLAR®/STEEL	46-48
MACHINE KNITS	NITRILE COATED	49-51
	POLYURETHANE COATED	52
	LATEX COATED	53-54
	SHELLS	55
	DOTTED & SCREEN COATED	56
LEATHER	LEATHER GLOVE TERMINOLOGY	57
	COWHIDE DRIVERS	58-60
	PIGSKIN DRIVERS	61
	DEERSKIN & GOATSKIN DRIVERS	62
	INSULATED DRIVERS	63-64
	GRAIN LEATHER PALMS	65
	SIDE SPLIT LEATHER PALMS	66-67
	SELECT & PREMIUM SPLIT LEATHER PALMS	68-69
	SHOULDER SPLIT LEATHER PALMS	70-71
	PIGSKIN & GOATSKIN LEATHER PALMS	72
	INSULATED LEATHER PALMS	73
	FREEZE BEATER® SERIES	74
	MINING GLOVES	75
	HIGH-VISIBILITY LEATHER GLOVES	76
	MIG-TIG WELDERS	77
	WELDERS	78-79
	PIT PRO™ & OGRE™ MECHANICS GLOVES	80-82
SUPPORTED	SUPPORTED/UNSUPPORTED/DISPOSABLE TERMINOLOGY	83
	CHEMICAL DEGRADATION CHART	84
	NITRILE DIPPED	85-86
	NEOPRENE DIPPED	87
	RUBBER DIPPED	88
	PVC DIPPED	89
	PVC DIPPED: INSULATED	90
	CUT & SEWN NITRILE & VINYL	91
UNSUPPORTED	NITRILE	92
	NEOPRENE & LATEX	93
DISPOSABLE	NITRILE	94
	LATEX, VINYL & PE	95
COTTON	HIGH-VISIBILITY COTTON STYLES	96
	DOUBLE PALMS & HOT MILLS	97
	TERRYS & CHORES	98
	CANVAS	99
	JERSEYS & INSPECTORS	100

HIGH PERFORMANCE GLOVES

TAEKI5®

Cordova Safety Products is an exclusive U.S. Distributor of Hand Protection made with Taeki5® fiber. Taeki5® fiber was developed in Europe specifically for the Hand Protection industry to address a multitude of industrial applications. This versatile multi-filament yarn combines high strength Taeki® fiber, Fiberglass and Synthetic fiber to provide a wide variety of physical properties including abrasion, cut and contact heat resistance. Cordova's Monarch series includes eight different models of Hand Protection & Sleeves available in several gauges and coatings for varying degrees of dexterity and durability.



3755 Monarch™ HCT

- 13-Gauge, Gray Taeki5® Shell
- Black HCT-Nitrile Palm Coating
- CE/EN 388: 4542
- CE Cut Level 5
- ANSI Cut Level 3: 1033 grams
- CE/EN 407: Contact Heat Level 1
- Sizes: S-XL



Abrasion Resistant: Minimum CE/EN388 Level 4 (8000+ Cycles)

Cut Resistant: Minimum CE/EN388 Level 5. Minimum ANSI/Level 3 (1000+ grams)

Contact Heat Resistant: Minimum CE/EN407 Level 1.

Comfortable: Soft, form-fitting shells for all day comfort.

Low-linting: Multi-filament construction is suitable for lint sensitive applications.

Washable: Extremely low shrinkage with no loss in physical properties. Unaffected by chlorine bleach and exposure to UV light.

Versatile: Available in a variety of colors and coatings.

Economical: Outstanding Performance/Price Ratio.



3750 S-XL
White Shell
White PU



3752 Monarch™ PU

- Black 13-Gauge Taeki5® Shell
- Polyurethane Palm Coating
- CE/EN 388: 4542
- CE Cut Level 5
- ANSI Cut Level 3: 1021 grams
- CE/EN 407: Contact Heat Level 1
- Sizes: XS-XXL



3751 XS-XXL
Gray Shell
Gray PU



3758 Monarch™ NRL

- 13-Gauge, Black Taeki5® Shell
- Black Natural Rubber Palm Coating
- CE/EN 388: 3542
- CE Cut Level 5
- ANSI Cut Level 3: 1264 grams
- CE/EN 407: Contact Heat Level 1
- Sizes: XS-XL

HIGH PERFORMANCE GLOVES

TAEKI5®



3745 Monarch Soft™

- 13-Gauge, Green/Black Shell
- Soft, Spun Taeki5® Fiber
- Microfoam Latex Coated
- CE/EN 388: 3542
- ANSI Cut Level 4, 1584 grams
- Sizes: S-XXL



3757 Monarch™ Leather

- 10-Gauge, Gray Taeki5® Shell
- Split Cowhide Leather Palm
- CE/EN 388: 4543
- CE Cut Level 5
- ANSI Cut Level 4: 2264 grams
- CE/EN 407: Contact Heat Level 2
- Sizes: S-XXL



3740 Monarch Sub-Zero™

- 7-Gauge, Hi-Vis Taeki5® Shell
- Brushed Interior
- Microfoam Latex Coated
- CE/EN 388:2542
- ANSI Cut Level 3, 1471 grams
- CE/EN 511: Contact Cold Level 1
- Sizes: S-XL

Caution: Some Products on this page contain Natural Rubber Latex which can cause allergic reactions in some individuals



Monarch™ Sleeves

- 13-Gauge, Gray Taeki5® Fiber
- CE/EN 388: 454X
- CE/EN 407: Contact Heat Level 2
- ANSI Cut Level 3, 1327 grams
- 3728:** 18-inch, Elastic at both ends
- 3728T:** 18-inch, Thumbslot with Elastic at top
- 3729V:** 18-inch, Velcro® Closure at top
- 3729VT:** 18-inch, Thumbslot with Velcro® Closure at top



3759 Monarch™ Dots

- 13-Gauge, Gray Taeki5® Shell
- Two-Side Nitrile Dots & Fingertips
- CE/EN 388: 454X
- ANSI Cut Level 3, 1085 grams
- CE/EN 407: Contact Heat Level 1
- Sizes: S-XXL



3770 Monarch™ Shell

- 13-Gauge, Gray Taeki5® Shell
- Use as a glove or glove liner
- CE/EN 388: 454X
- CE Cut Level 5
- ANSI Cut Level 3: 1205 grams
- CE/EN 407: Contact Heat Level 1
- Sizes: S-XXL

HIGH PERFORMANCE GLOVES

UHMWPE

Ultra High Molecular Weight Polyethylene (UHMWPE) has a tensile strength 15 times stronger than steel on an equal weight basis. Hand & Arm Protection made with UHMWPE is lightweight, comfortable, abrasion resistant and cut resistant. Tests have shown that gloves made with UHMWPE fibers have up to 20 times the abrasion resistance of gloves made with spun Aramid yarns.



3710Halo™

- 13-Gauge, White Cut Resistant Shell
- Made with UHMWPE Fiber
- White Polyurethane Palm Coating
- CE Cut Level 3, CE/EN 388: 4342
- Sizes: XS-XXL



3710GUppercut™

- 13-Gauge, Salt & Pepper Cut Resistant Shell
- Made with UHMWPE Fiber
- Gray Polyurethane Palm Coating
- CE Cut Level 3, CE/EN 388: 4343
- Sizes: XS-XXL



3700

- 13-Gauge, White Cut Resistant Shell
- Made with UHMWPE Fiber
- White Polyurethane Palm Coating
- CE Cut Level 3, CE/EN 388: 4342
- Sizes: XS-XXL

3700G

- 13-Gauge, Gray Plaited Cut Resistant Shell
- Made with UHMWPE Fiber
- Gray Polyurethane Palm Coating
- CE Cut Level 4, CE/EN 388: 4442
- Sizes: XS-XXL



3760 Sharpguard™

- 13-Gauge, Salt & Pepper Cut Resistant Shell
- Made with UHMWPE Fiber
- Black Nitrile 3/4 Coating
- CE Cut Level 3, CE/EN 388: 4342
- Sizes: S-XL



HIGH PERFORMANCE GLOVES

**UHMWPE
SPECTRA GUARD®
STAINLESS STEEL**



3712G Rival™

- 13-Gauge, Gray UHMWPE Shell
- Gray Polyurethane Coating
- CE Cut Level 3
- Sizes: XS-XXL



3712 Mirage™

- 13-Gauge, White UHMWPE Shell
- White Polyurethane Coating
- CE Cut Level 3
- Sizes: XS-XL



3711G Valor™

- 13-Gauge, Salt & Pepper UHMWPE Shell
- Gray Polyurethane Coating
- CE Cut Level 3
- Sizes: XS-XXL



3711 Javelin™

- 13-Gauge White UHMWPE Shell
- White Polyurethane Coating
- CE Cut Level 3
- Sizes: XS-XL



3025 S-XL

- 7-Gauge, White SpectraGuard® Shell
- Spectra Guard®: Spectra® + Fiberglass
- CE Cut Level 5
- ANSI Cut Level 4: 3006 grams

3035 S-XL

- 7-Gauge, White Steel Core Shell
- 2 Strands of Stainless Steel
- CE Cut Level 5
- ANSI Cut Level 5, 5937 grams



3725 Fusion™

- Cut & Splash Protection
- 13-Gauge UHMWPE Shell
- Full Blue Nitrile Inner Layer
- Black Sandy Nitrile Outer Palm Coating
- CE Cut Level 3
- ANSI Cut Level 2, 557 grams
- Sizes: S-2XL



3719G2 RipCord™

- High Tenacity Nylon Sleeve
- Nylon/Cotton Plaited
- 18-inch Length
- 2-inch Gusset at Bicep
- ANSI Cut Level 2, 671 grams

3729G4: 18-inch Length with 4-inch Gusset

Applications: Food Processing, Metal Fabrication, Paper/Pulp Industry, Plastics Manufacturing

HIGH PERFORMANCE GLOVES

KEVLAR®

Kevlar® has a tensile strength 5 times stronger than steel on an equal weight basis. Cut-resistant Kevlar® yarn offers high temperature resistance and will not support combustion. Gloves & Sleeves made with Kevlar® are available in a variety of gauges, coatings and lengths to address a multitude of industrial applications



3050 Power-Cor™

- 10-Gauge, Kevlar® Shell
- Blue Crinkle Finish Latex Palm Coating
- CE Cut Level 4, CE/EN 388: 3444
- ANSI Cut Level 3, 1030 grams
- ANSI Abrasion Level 3
- Sizes: S-XL

Applications:

Drywall, Roofing,
Metal Fabrication,
Bottling, Canning,
Glass Handling

3090 Power-Cor Leather™

- 7-Gauge, 100% Kevlar® Shell
- Split Cowhide Leather Palm
- Sewn with Kevlar® Thread
- CE Cut Level 2, CE/EN388: 424X
- ANSI Cut Level 4, 1611 grams
- Sizes: XS-XL



3095

- 7-Gauge, Kevlar®/Cotton Plaited Shell
- Split Cowhide Leather Palm
- Sizes: S-XL



3055 Cor-Touch CR™

- 15-Gauge, Kevlar®/Lycra® Shell
- Black Textured Nitrile Palm Coating
- CE Cut Level 2, CE/EN 388: 3221
- ANSI Cut Level 2, 629 grams
- Sizes: XS-XXL

Caution: Some Products on this page contain Natural Rubber Latex which may cause allergic reactions in some individuals.

3055C Cor-Touch KV4™

- 13-Gauge, Kevlar®/Lycra® Shell
- Black Foam Nitrile Palm Coating
- CE Cut Level 4, CE/EN 388
- ANSI Cut Level 2, 532 grams
- Sizes: XS-XXL



HIGH PERFORMANCE GLOVES

KEVLAR®



3070

Kevlar® Shells & Dots

Style	Description	Sizes
3070	7-Gauge, 100% Kevlar® Shell, ASTM/CPPT Cut Level 3: 1118 grams	XS-XL
3060	7-Gauge, Kevlar®/Cotton Plaited Shell, ASTM/CPPT Cut Level 2: 895 grams	S-L
3062	10-Gauge, Kevlar®/Cotton Plaited Shell	S & L
3075	7-Gauge, 100% Kevlar® Shell with Two Side PVC Dots	XS-XL
3065	7-Gauge, Kevlar®/Cotton Plaited Shell with Two Side PVC Dots	XS-XL
3066	10-Gauge, Kevlar®/Cotton Plaited Shell with Two Side PVC Dots	S-XL

Applications: Automotive Assembly,
Masonry/Tile, Recycling, General
Carpentry, Appliance Manufacturing



3040

- 24 ounce, Kevlar®/Cotton Terry
- Loop-Out Construction with Knit Wrist
- Size: L, S



3066

Kevlar® Sleeves

- 100% Kevlar®
- Multiple Lengths Available

Style	Description
3010	Standard 10-inch Kevlar® Sleeve, Two-Ply
3014	Standard 14-inch Kevlar® Sleeve, Two-Ply
3014T	Standard 14-inch Kevlar® Sleeve, Thumb Slot, Two-Ply
3018	Standard 18-inch Kevlar® Sleeve, Two-Ply
3018T	Standard 18-inch Kevlar® Sleeve, Thumb Slot, Two-Ply
3014E	Economy 14-inch Kevlar® Sleeve, Single-Ply
3018E	Economy 18-inch Kevlar® Sleeve, Single-Ply
3018TE	Economy 18-inch Kevlar® Sleeve, Thumb Slot, Single-Ply

All Standard Kevlar® Sleeves: ASTM/CPPT Cut Level 4: 1681 grams

All Economy Kevlar® Sleeves: ASTM/CPPT Cut Level 2: 807 grams

3014



3018T



HIGH PERFORMANCE GLOVES

KEVLAR® / STEEL



3730 Power-Cor Xtra™

- 13-Gauge, Kevlar® / Steel / Synthetic Fiber Shell
- 3/4 Foam Nitrile Coating
- CE Cut Level 5
- CE-EN 388: 4532
- ANSI Cut Level 4, 2950 grams
- Sizes: S-XXL



3735 Power-Cor Max™

- 10-Gauge, Kevlar® / Steel / Cotton Shell
- CE-EN 388: 154X
- ANSI Cut Level 4, 2657 grams
- Sizes: S-2XL



3737 Power-Cor Max™

- 10-Gauge, Kevlar® / Steel / Cotton Shell
- Split Cowhide Leather Palm with Pigskin Forchettes
- CE Cut Level 5
- CE-EN 388: 4544
- ANSI Cut Level 4, 2688 grams
- Sizes: S-2XL



3736 Power-Cor Max™

- 10-Gauge, Kevlar® / Steel / Cotton Shell
- Blue Crinkle Finish Latex Coating
- CE Cut Level 5
- CE-EN 388: 3544
- ANSI Cut Level 4, 2355 grams
- Sizes: S-2XL

MACHINE KNITS-MICROFINISH® NITRILE COATED

MicroFinish® Nitrile incorporates thousands of microscopic pores on the surface of the coating. This creates a vacuum effect that disperses liquids and allows the entire grip area to make clean contact with objects and surfaces. Unlike traditional porous coatings, the two-layer MicroFinish® coating will not allow liquids to penetrate through the glove and contact the hand.



AG591 ActivGrip™ Advance-KEV

- 13-Gauge, Kevlar® Cut Resistant Shell
- Black MicroFinish® Nitrile Palm Coating
- CE/EN 388: 4342
- CE Cut Level 3
- ASTM/CPPT Cut Level 2: 736 grams
- Sizes: S-XXL



AG566 ActivGrip™

- 13-Gauge, Seamless Cotton/Poly Shell
- Green MicroFinish® Nitrile Coating
- 12-inch Length
- CE/EN 388: 4121
- Sizes: S-XL



PG391 Power Grab™ Thermo

- 10-Gauge Brushed Acrylic Shell
- Black MicroFinish® Latex Coating
- CE-EN388: 1231
- CE-EN511: Level 1 (Contact Cold)
- Sizes: S-XXL



AG503 ActivGrip™ Advance

- 13-Gauge Nylon Shell
- Full MicroFinish® Nitrile Coating
- CE-EN 388: 4141
- Sizes: M-XL



AG581 ActivGrip™ Advance

- 13-Gauge, Gray/Purple Nylon Shell
- Black MicroFinish® Nitrile Palm Coating
- CE/EN 388: 3121
- Sizes: XS-XXL

Applications: Oily Part Handling, Assembly Operations, Light/ Medium Fabrication, Machining Operations, Electrical Installation

MACHINE KNITS - NITRILE/PU COATED

- Stretchable Nylon/Spandex Seamless Shells conform to hands for exact fit and exceptional comfort
- Flexible Nitrile/PU blended coatings provide durability while minimizing hand fatigue
- Maximum Tactile Sensitivity for precision assembly and handling small parts
- Ideal for appliance manufacturing, electricians, plumbing, carpentry and automotive assembly



Conquest™

6905 XS-XXL

- 13-Gauge, Nylon/Spandex Shell
- Nitrile/PU Palm Coating
- CE-EN 388: 4131

Conquest Xtra™

6910 XS-XXL

- 13-Gauge, Nylon/Spandex Shell
- Nitrile/PU 3/4 Coating
- CE-EN 388: 4131



Conquest Max™

6920 XS-XXL

- 13-Gauge, Nylon/Spandex Shell
- Nitrile/PU 3/4 Coating
- Nitrile Dots
- CE-EN 388: 4131

Conquest Plus™

6915 XS-XXL

- 13-Gauge, Nylon/Spandex Shell
- Nitrile/PU Palm Coating
- Nitrile Dots
- CE-EN388: 4131



Cor-Touch Xtra™

6899 XS-XXL

- 13-Gauge, Nylon/Spandex Shell
- Nitrile/PU 3/4 Coating
- Nitrile Dots
- CE-EN 388: 4131



MACHINE KNITS-NITRILE COATED

Nitrile is an oil-resistant synthetic rubber that is abrasion, snag & puncture resistant. Seamless Nitrile gloves are incredibly durable and offer excellent sense of touch. "Flat" Nitrile coatings are smooth, shiny and liquid-resistant. "Foam" Nitrile coatings are porous which channels oil from the glove surface for a secure grip in light oil applications.



6893 Cor-Touch Foam™

- 13-Gauge, Gray Nylon
- Black Foam Nitrile Palm Coating
- CE/EN 388: 4121
- Sizes: S-XL



6897 Cor-Touch Foam Plus™

- 13-Gauge, Black Nylon
- 3/4 Black Foam Nitrile Coating
- CE/EN 388: 4121
- Sizes: XS-XL



6890 Cor-Touch™

- 13-Gauge, White Nylon
- Gray Flat Nitrile Palm Coating
- CE/EN 388: 4121
- Sizes: S-XL

6891 Cor-Touch Foam II™

- 13-Gauge, White Nylon
- Gray Foam Nitrile Palm Coating
- CE/EN 388: 4121
- Sizes: XS-XL

Applications:

Carpentry, Plumbing,
Masonry/Tile, Automotive
Assembly, Inspection

6890G Cor-Touch™

- 13-Gauge, Gray Nylon
- Black Flat Nitrile Palm Coating
- CE/EN 388: 4121
- Sizes: S-XL



6894 Cor-Touch II™

- 13-Gauge, Gray Polyester
- Black Flat Nitrile Palm Coating
- CE/EN 388: 3121
- Sizes: XS-XL



6892 Cor-Touch II™

- 13-Gauge, White Polyester
- Gray Flat Nitrile Palm Coating
- CE/EN 388: 3121
- Sizes: S-XL

MACHINE KNITS-PU COATED

Polyurethane is a petroleum-based thermoplastic elastomer that offers a variety of advantages for use in glove production. Polyurethane coatings are resistant to tears, snags and abrasions and offer unmatched tactile sensitivity. PU is soft, odorless, breathable and free of latex proteins and chemical accelerators.

Applications: Spray Painting, Appliance Manufacturing, Sensitive Assembly Operations, Aerospace, Wiring, Public Utilities



6901 Cor-Brite™

- 13-Gauge, Hi-Vis Polyester
- Orange Polyurethane Palm Coating
- Sizes: XS-XXL



6895G Cor-Touch Lite™

- 15-Gauge, Gray Nylon
- Gray Polyurethane Palm Coating
- CE/EN 388: 4131
- Sizes: XS-XXL



6895 Cor-Touch Lite™

- 15-Gauge, White Nylon
- White Polyurethane Palm Coating
- CE/EN 388: 4131
- Sizes: XS-XXL



6895C

- 13-Gauge, White Nylon/White PU
- Sizes: XS-XXL

6898C

- 13-Gauge, White Polyester/White PU
- Sizes: XS-XXL



6896C

- 13-Gauge, Black Nylon/Black PU
- Sizes: XS-XXL

6898CB

- 13-Gauge, Black Polyester/Black PU
- Sizes: XS-XXL



6895CG

- 13-Gauge, Gray Nylon/Gray PU
- Sizes: XS-XXL

6898CG

- 13-Gauge Gray Polyester/Gray PU
- Sizes: XS-XXL

MACHINE KNITS-LATEX COATED

Natural Rubber Latex gloves offer exceptional gripping power and outstanding protection against punctures and abrasion. Seamless Machine Knit shells and the high elasticity of Latex make gloves form-fitting, flexible and very comfortable.



3896 Cor-Grip™

- 10-Gauge, Gray Polyester/Cotton Shell
- Blue Crinkle Finish Latex Palm Coating
- Fully Coated Thumb
- CE/EN 388: 2142
- Sizes: S-XL

3898

- Economy Version
- Sizes: S-XL

3996

- Premium, 3/4 Blue Latex Coating
- Sizes: S-XL



3895 Cor-Grip™

- 10-Gauge, Gray Polyester/Cotton Shell
- Gray Crinkle Finish Latex Palm Coating
- CE/EN 388: 2142
- Sizes: S-XL

3897

- Economy Version
- Sizes: S-XL

3885

- Economy, Gray Recycled Fiber Shell
- Black Crinkle Finish Latex Palm Coating
- Sizes: S-XL



3894 Cor-Grip II™

- 10-Gauge, Yellow Polyester/Cotton Shell
- Blue Crinkle Finish Latex Palm Coating
- CE/EN 388: 2142
- Sizes: S-XL

Applications: Drywall, Roofing, Forestry, Recycling Operations, Construction, Masonry/ Tile Installation, Shipping & Receiving

Caution: These products contain Natural Rubber Latex which may cause allergic reactions in some individuals.



3889 Therma-Viz™

- 10-Gauge, High-Vis Thermal Terry Shell
- Brushed, Loop-In, Acrylic/Polyester
- Blue Crinkle Finish Latex Palm Coating
- CE/EN 388: 3131
- Sizes: S-XL



3899 Therma-Cor™

- 10-Gauge, Gray Thermal Terry Shell
- Brushed, Loop-In, Acrylic/Cotton/Poly
- Gray Crinkle Finish Latex Palm Coating
- CE/EN 388: 3131
- Sizes: S-XL



3892

- 10-Gauge, Natural, Poly/Cotton Shell
- Green Standard Latex Coating
- Sizes: S-XL

3893

- Blue Standard Latex Coating
- Sizes: S-XL

3891

- Blue Economy Latex Coating
- Sizes: S & L

3890: Red Economy Latex Coating

- Size: L

MACHINE KNITS-FOAM LATEX COATED

Cordova's Foam Latex Series could very well be the most comfortable and flexible Latex Coated Machine Knit Gloves on the market today. A special foaming process produces a velvety-soft, nonporous Natural Rubber coating with a very dense, texturized finish. Our Foam Latex Gloves are available with three different shell types for varying levels of protection, dexterity and thermal protection.

Applications:

Durable Good Assembly,
Commercial Fishing,
Construction, Plumbing,
Freight Handling, Wire/
Cable Industry



3999 Cold Snap™

- 7-Gauge, Hi Vis Green, Thermal Terry Shell
- Brushed, Loop-In Acrylic
- Black Foam Latex Palm Coating
- Sizes: S-XL

Caution: These products contain Natural Rubber Latex which may cause allergic reactions in some individuals.



3991 Contact™

- 13-Gauge, Hi Vis Green, Nylon Shell
- Black Foam Latex Palm Coating
- Sizes: S-XL



3995 Charger™

- 10-Gauge, Hi Vis Green, Poly/Cotton Shell
- Black Foam Latex Palm Coating
- Sizes: S-XL

MACHINE KNITS-SHELLS



3400

NATURAL

Style	Description	Sizes
3411	Economy Weight, Cotton/Poly	S-L
3410	Standard Weight, Cotton/Poly	XS-L
3412	Standard Weight, Cotton/Poly, Half-Finger	S-L
3400	Medium Weight, Cotton/Poly	XS-XL
3435	Medium Weight, 100% Cotton	S-XL
3480	Heavy Weight, Cotton/Poly	S-L
3408	13-Gauge, Regular Weight, Poly/Cotton	S & L
3403	13-Gauge, Lightweight Poly/Cotton	S & L

Applications: Food Processing, Materials Handling, Work Glove Liners, Janitorial/ Sanitation, Warehousing, Agriculture



3185G

GRAY

Style	Description	Sizes
3411G	Economy Weight, Cotton/Poly	XS, S, L
3415G	Standard Weight, Cotton/Poly	S-L
3185G	Heavy Weight, Cotton/Poly	S & L

BLEACHED WHITE



3500

Style	Description	Sizes
3520	Standard Weight, Cotton/Poly	S-L
3510	Medium Weight, 100% Polyester	S-XL
3500	Medium Weight, Cotton/Poly	S-L
3413N	Medium Weight, 100% Nylon	S-XL
3185WL	Heavy Weight, Cotton/Poly	L



H3677



THERMAL

Style	Description	Sizes
FB-C3730	White Thermastat®	L
FB-C3830	Blue Thermastat®	L
FB-C3700A	Green Ragg Wool	S/M, L/XL
FB-C3750	Green Ragg Wool Mitten	L
H 3677	Black Acrylic/Spandex®	L



3100

MULTI-COLOR

Style	Description	Sizes
3100	Medium Weight, Cotton/Poly	S-XL
3160	Heavy Weight, Cotton/Poly	S, M, L
3115	Extra Heavy Weight, Cotton/Poly	S & L

MACHINE KNITS-DOTTED & SCREEN COATED



3800

Application:

Construction, General
Carpentry, Fishing,
Warehousing,
Masonry/Tile



3855

ONE SIDE DOTS

Style	Description	Sizes
3801	Economy Weight, Natural, Cotton/Poly	S & L
3802	Economy Weight, Natural, 100% Cotton, Dots & Fingertips	S & L
3805/P	Standard Weight, Natural, Cotton/Poly	S & L
3800	Medium Weight, Bleached, Cotton/Poly	S & L
3805	Medium Weight, Natural, Cotton/Poly	S & L
3815	Standard Weight, Natural, Poly/Cotton, White Dots	S & L
3808	13-Gauge, Regular weight, Natural, Cotton/Poly	S & L
3803	13-Gauge, Lightweight, Natural, Cotton/Poly	S & L

TWO SIDE DOTS

Style	Description	Sizes
3851	Economy Weight, Natural, Cotton/Poly	S, M, L
3855/P	Standard Weight, Natural, Cotton/Poly	S, L, XL
3856	Standard Weight, Natural, Cotton/Poly, Fingerless	S & L
3850	Medium Weight, Bleached, Cotton/Poly	S & L
3855	Medium Weight, Natural, Cotton/Poly	S, L, XL
3855G	Medium Weight, Gray, Cotton/Poly	S & L
3858	13-Gauge, Regular weight Natural, Cotton/Poly	S & L
3853	13-Gauge, Lightweight, Natural Cotton/Poly	S & L



3900

- 7-Gauge, Orange Poly/
Cotton/Nylon Shell
- Soft PVC Criss-Cross Coating
- Sizes: S-XL

3900G

- Gray Version



3870

- 7-Gauge, Cotton/Poly Shell
- Black PVC Screen Coated Palm
- Sizes: S & L

3875

- Fingerless Version

3860

- 10-Gauge, 100% Cotton Shell
- Blue Nitrile Screen Coated Palm
- Sizes: S & L



3880

- 7-Gauge, Cotton/Poly Shell
- Blue PVC Blocks, Two-Sides
- Sizes: S & L

3881

- One Side PVC Blocks

LEATHER GLOVE INFORMATION

LEATHER PALM FEATURES

- | | |
|----------------------------|-------------------------|
| 1) Leather Fingertips | 5) Continuous Pull |
| 2) Full Leather Forefinger | 6) Safety Cuff |
| 3) Welted Seams | 7) Shirred Elastic Back |
| 4) Wing Thumb | 8) Knuckle Strap |

TYPES OF LEATHER

COWHIDE

Cowhide is comfortable, durable and abrasion resistant. It is the most commonly used leather in the glove market. Cowhide leather gloves are typically chrome tanned to promote longevity.

PIGSKIN

Pigskin offers the greatest breathability due to large pores in the hide. Pigskin is ideal for wet applications given its tendency to remain soft after exposure to moisture.

GOATSKIN

Goatskin is preferred where tactile sensitivity is required. Goatskin provides excellent tensile strength and abrasion resistance. The high lanolin content makes it one of the softest leathers available.

DEERSKIN

Deerskin is a soft, supple and luxurious hide. It offers excellent dexterity, durability, comfort and high tensile strength.



GRAIN LEATHER

Grain leather is the smooth, attractive exterior side of the animal hide. Grain leather is comfortable, durable and offers better dexterity and sense of touch.

SPLIT LEATHER

Split leather is the internal portion of the animal hide. The rougher texture of split leather makes it easy to differentiate from grain leather. Split is the most popular hide used in manufacturing leather palm gloves. It offers abrasion resistance for more heavy duty applications.

VS.



WINGTHUMB

Wing thumbs are designed for open handed work (pushing, pulling, lifting, etc.) The seams are not exposed to wear when the palm is open, thus extending the life of the work glove.



THUMB CONSTRUCTION

KEYSTONE THUMB

Keystone thumbs offer the highest range of motion and are the most comfortable. This style offers a wide range of applications and is the most ergonomically correct work glove.



STRAIGHT THUMB

Straight thumbs are designed for close fisted work (shoveling, prying, sweeping, etc.) When the fist is closed, the seams are out of the wear area.



GRAIN COWHIDE DRIVERS



8235

- Premium Grain Cowhide Driver
- Unlined
- Shirred Elastic Back
- Keystone Thumb
- Sizes: S-XL

8210A

- Select Grain Cowhide Driver
- Sizes XS-2XL

8210

- Standard Grain Cowhide Driver
- Sizes S-3XL



8220

- Standard Grain Cowhide Driver
- Unlined
- Shirred Elastic Back
- Wing Thumb
- Wraparound Forefinger
- Sizes: S-2XL

1200

- Select Grain Cowhide Driver
- Seamless Forefinger
- Sizes: XS-XL

8251 S-3XL

- Hi-Vis Orange Silk Screened Fingertips

8211HV S-3XL

- Standard Grain Cowhide Driver
- Hi-Vis Orange Fingertips
- Unlined
- Shirred Elastic Back
- Keystone Thumb

HEM COLOR SIZING CHART

	Small
	Medium
	Large
	X-Large
	2X-Large
	3X-Large



GRAIN COWHIDE DRIVERS



8201

- Standard Grain Cowhide Driver
- Unlined
- Shirred Elastic Back
- Straight Thumb
- Sizes: XS-3XL



8225

- Select Grain Cowhide Driver
- Unlined
- Leather Pull Strap Back
- Keystone Thumb
- Sizes: S-XL

8223

- Economy Grain Cowhide Driver
- Sizes S-XL



8221

- Select Grain Cowhide Driver
- Unlined
- Ball & Tape Back
- Keystone Thumb
- Sizes: S-2XL



GRAIN & SPLIT COWHIDE DRIVERS



8231

- Select Grain Cowhide Driver
- Golden Brown Split Cowhide Back
- Unlined
- Shirred Elastic Back
- Keystone Thumb
- Sizes: S-XL



8232

- Select Grain Cowhide Driver
- Brown Split Cowhide Back
- Unlined
- Shirred Elastic Back
- Keystone Thumb
- Sizes: XS-2XL

8234

- Select Grain Cowhide Driver
- Brown Split Cowhide Back
- Kevlar® Sewn
- Sizes: S-XL



8230

- Select Grain Cowhide Driver
- Gray Split Cowhide Back
- Unlined
- Shirred Elastic Back
- Keystone Thumb
- Sizes: S-XL

8233

- Standard Grain Cowhide Driver
- Patch Palm Design
- Gray Split Cowhide Back
- Sizes: S-XL



7800

- Select Split Cowhide Driver
- Gray/Unlined
- Shirred Elastic Back
- Keystone Thumb
- Sizes: S-XL

7805 S-3XL

- Economy Split Driver, Keystone Thumb

7800K XS-XL

- Select Split Driver, Keystone Thumb
- Kevlar® Seamless Lining & Stitching



7810

- Select Split Cowhide Driver
- Russet Color
- Unlined
- Shirred Elastic Back
- Keystone Thumb
- Sizes: S-XL

PIGSKIN DRIVERS



8821

- Premium Grain Pigskin Driver
- Unlined
- Shirred Elastic Back
- Keystone Thumb
- Sizes: S-XL

8820

- Select Grain Pigskin Driver
- Sizes: S-XL

8810

- Economy Grain Pigskin Driver
- Sizes: S-2XL



8825

- Select Grain Pigskin Driver
- Brown Split Pigskin Back
- Seamless Forefinger
- Unlined
- Shirred Elastic Back
- Keystone Thumb
- Sizes: S-XL

8815

- Select Grain Pigskin Driver
- Gray Split Cowhide Back
- Standard Forefinger
- Unlined
- Shirred Elastic Back
- Keystone Thumb
- Sizes: S-XL



8818

- Select Grain Pigskin Driver
- Unlined
- Shirred Elastic Back
- Straight Thumb
- Sizes: S-XL

8800

- Economy Grain Pigskin Driver
- Sizes: S-XL



DEERSKIN & GOATSKIN DRIVERS



9015

- Select Grain Deerskin Driver
- Split Deerskin Back
- Unlined
- Shirred Elastic Back
- Keystone Thumb
- Sizes: S-XL



9000

- Premium Grain Deerskin Driver
- Unlined
- Shirred Elastic Back
- Keystone Thumb
- Sizes: XXS-2XL

9000B

- Standard Grain Deerskin Driver
- Sizes: S-XL



8570

- Select Grain Goatskin Driver
- Gold Color
- Fancy Thumb Patch
- Unlined
- Shirred Elastic Back
- Keystone Thumb
- Sizes: XS-XL



8500

- Premium Grain Goatskin Driver
- Unlined
- Shirred Elastic Back
- Keystone Thumb
- Sizes: 2XS-2XL

8502

- Standard Grain Goatskin Driver
- Keystone Thumb
- Sizes: S-2XL

8501

- Standard Grain Goatskin Driver
- Straight Thumb
- Sizes: S-2XL



8595K

- Golden Grain Goatskin Driver
- Seamless Kevlar® Knit Lining
- ANSI Cut Level 2, 654 grams
- Sizes: XS-XXL

INSULATED COWHIDE DRIVERS



8255

- Premium Grain Cowhide Driver
- Thinsulate® Lining
- Shirred Elastic Back
- Keystone Thumb
- Sizes: S-2XL



8240

- Premium Grain Cowhide Driver
- Red Fleece Lining
- Shirred Elastic Back
- Keystone Thumb
- Sizes: S-3XL



7915

- Standard Split Cowhide Driver
- Gray Color
- White Fleece Lining
- Shirred Elastic Back
- Keystone Thumb
- Sizes: S-XL

8245

- White Fleece Lining
- Sizes: S-2XL



7910

- Standard Split Cowhide Driver
- Russet Color
- Red Fleece Lining
- Shirred Elastic Back
- Keystone Thumb
- Sizes: S-2XL

LINING COMPARISON

3M THINSULATE®:

The warmest thin insulation on the market. Thinsulate® has about 1.5 times more warmth than down feather lining and absorbs less than 1% of its weight in water which allows it to retain its insulating ability even in damp conditions.

FLEECE:

Brushed 100% Cotton traps air to keep hands warm. Most commonly used glove lining material.

PILE:

Soft synthetic wool (acrylic) provides excellent insulative properties and will not absorb water.

BOA:

Low cost synthetic Fur. Provides soft, luxurious feel and offers good warmth retention

THERMAL:

Economical, Waffle Knit, 100% Cotton Fabric



7902

- Standard Split Cowhide Driver
- Pile Lining
- Shirred Elastic Back
- Keystone Thumb
- Sizes: S-2XL

7930

- Boa Pile Lined
- Sizes: S-2XL

INSULATED DRIVERS



8550

- Premium Grain Goatskin Driver
- Thinsulate® Lining
- Shirred Elastic Back
- Keystone Thumb
- Sizes: S-2XL



8942

- Premium Grain Pigskin Driver
- Thinsulate® Lining
- Shirred Elastic Back
- Keystone Thumb
- Sizes: S-2XL



8922

- Premium Grain Pigskin Driver
- Red Fleece Lining
- Shirred Elastic Back
- Keystone Thumb
- Sizes: S-2XL

8915

- White Fleece Lining
- Sizes: S-XL



9050

- Premium Grain Deerskin Driver
- Thinsulate® Lining
- Shirred Elastic Back
- Keystone Thumb
- Sizes: XS-XL



9060

- Select Grain Deerskin Driver
- Split Deerskin Back
- Red Fleece Lining
- Shirred Elastic Back
- Keystone Thumb
- Sizes: S-XL

GRAIN COWHIDE LEATHER PALMS



8310

- Premium Grain Cowhide Leather Palm
- Striped Canvas Back
- Gunn Cut Pattern
- Rubberized Gauntlet Cuff
- Sizes: S-XL



8300

- Premium Grain Cowhide Leather Palm
- Striped Canvas Back
- Gunn Cut Pattern
- Rubberized Safety Cuff
- Sizes: S-XL

8305

- Standard Grain Cowhide Leather Palm
- Sizes: S-XXL

8350

- Standard Grain Cowhide Leather Palm
- Palm Patch
- Size: L



SIDE SPLIT LEATHER PALMS



7500A

- Premium Double Chrome Tanned
- Heavy Side Split Leather Palm
- Gunn Cut Pattern
- Kevlar® Sewn
- Rubberized Safety Cuff
- Sizes: S-XXL

7500 Tuf-Cor™

- Heavy Side Split Leather Palm
- Kevlar® Sewn
- Rubberized Safety Cuff
- Sizes: S-XXL



7510A

- Premium Double Chrome Tanned
- Heavy Side Split Leather Palm
- Gunn Cut Pattern
- Kevlar® Sewn
- Rubberized Gauntlet Cuff
- Sizes: M-XL

7510

- Heavy Side Split Leather Palm
- Kevlar® Sewn
- Rubberized Gauntlet Cuff
- Sizes: M-XL



7540A

- Premium Double Chrome Tanned
- Heavy Side Split Leather Double Palm
- Gunn Cut Pattern
- Kevlar® Sewn
- Rubberized Safety Cuff
- Sizes: M-XL

7540 Tuf-Cor™

- Heavy Side Split Leather Double Palm
- Kevlar® Sewn
- Rubberized Safety Cuff
- Sizes: S-XL



7550

- Heavy Side Split Leather Double Palm
- Gunn Cut Pattern
- Kevlar® Sewn
- Rubberized Gauntlet Cuff
- Sizes: L, XL

7534K M-XL

- Heavy Side Split Leather Palm
- Full Leather Back
- Seamless Kevlar® Knit Lining
- Kevlar® Sewn
- Rubberized Gauntlet Cuff

SIDE SPLIT LEATHER PALMS



1030

- Side Split Leather Palm
- Gunn Cut Pattern
- Kevlar® Sewn
- Rubberized Safety Cuff
- Sizes: XS-XL

1040

- Side Split Leather Palm
- Kevlar® Sewn
- Rubberized Gauntlet Cuff
- Size: S-XL

1051

- Side Split Leather Double Palm
- Kevlar® Sewn
- Rubberized Safety Cuff
- Size: S-XL



7590

- Side Split Leather Palm
- Striped Canvas Back
- Gunn Cut Pattern
- Kevlar® Sewn
- Rubberized Safety Cuff
- Sizes: L-XXL



7480

- Side Split Leather Palm
- Russet Leather
- Yellow Canvas Back
- Gunn Cut Pattern
- Kevlar® Sewn
- Rubberized Safety Cuff
- Sizes: L



PREMIUM & SELECT SHOULDER LEATHER PALMS



7254R

- Select Shoulder Leather Palm
- Blue/Red Striped Fabric
- Gunn Cut Pattern
- Rubberized Gauntlet Cuff
- Size: L

7250R

- Select Shoulder Leather Palm
- Rubberized Safety Cuff
- Size: S-XL



7300R

- Premium Shoulder Leather Palm
- Blue/Red Striped Fabric
- Gunn Cut Pattern
- Rubberized Safety Cuff
- Sizes: S-XXL



7330

- Premium Shoulder Leather Palm
- Full Leather Back
- Blue/Red Striped Fabric
- Rubberized Safety Cuff
- Size: L & XL

7340

- Full Leather Back
- Rubberized Gauntlet Cuff
- Size: L & XL

7320

- 3/4 Leather Back
- Rubberized Safety Cuff
- Size: L



7351RA

- Premium Shoulder Leather Double Palm
- Blue/Red Striped Fabric
- Gunn Cut Pattern
- Rubberized Safety Cuff
- Size: L

7351R

- Select Shoulder Leather Double Palm
- Rubberized Safety Cuff, Pink/Green Striped Fabric
- Size: L

7352R

- Select Shoulder Leather Double Palm
- Rubberized Safety Cuff
- Size: L (Ladies)

PREMIUM & SELECT SHOULDER LEATHER PALMS



7380

- Select Shoulder Leather Palm
- Russet Leather/Yellow Canvas
- Gunn Cut Pattern
- Rubberized Gauntlet Cuff
- Size: L



7261

- Select Shoulder Leather Double Palm
- Blue/Red Striped Canvas Back
- Gunn Cut Pattern
- Rubberized Safety Cuff
- Sizes: M-XL (**7262: Ladies Large**)

7264

- Rubberized Gauntlet Cuff
- Size: L

7261JP

- Joint Palm Construction
- Rubberized Safety Cuff
- Size: L-2XL (**7262JP: Ladies Size**)



7140

- Select Shoulder Leather Palm
- Gunn Cut Pattern
- Blue Knit Wrist
- Sizes: L

7142

- Same as above.
- Size: L (Ladies)



SHOULDER LEATHER PALMS



7200R

- Shoulder Leather Palm
- Blue/Red Striped Fabric
- Gunn Cut Pattern
- Rubberized Safety Cuff
- Sizes: S-3XL

7240

- Rubberized Gauntlet Cuff
- Size: S-XL

7266

- Internal Double Palm
- PE Safety Cuff
- Sizes: S-2XL



7235

- Shoulder Leather Palm
- Blue/Red Striped Fabric
- Gunn Cut Pattern
- Starched Gauntlet Cuff
- Size: L

7200S

- Starched Safety Cuff
- Size: L

7202S

- Starched Safety Cuff
- Size: L (Ladies)



7200D

- Shoulder Leather Palm
- White Canvas Back
- Gunn Cut Pattern
- Washable Duck Cuff
- Size: S & L



7220

- Shoulder Leather Palm
- Patch Palm Construction
- Denim Fabric Back
- Gunn Cut Pattern
- Denim Safety Cuff
- Size: L

7210

- Patch Palm Construction
- Blue/Red Striped Fabric
- Size: L

SHOULDER LEATHER PALMS

7120

- Shoulder Leather Palm
- Clute Pattern
- Blue/Red Striped Fabric
- Natural Knit Wrist
- Size: L

7122

- Size: L (Ladies)



7205R

- Shoulder Leather Palm
- Blue/Red Striped Canvas Back
- Gunn Cut Pattern
- Rubberized Safety Cuff
- Sizes: S-XL

7205RY

- Yellow Canvas Back
- Yellow Rubberized Safety Cuff
- Size: S-XL

7201R

- Green/Pink Striped Fabric
- Rubberized Safety Cuff
- Size: S-XL



PIGSKIN & GOATSKIN LEATHER PALMS

Pigskin offers the greatest breathability of all leathers due to the large pores in the hide. Pigskin is ideal for wet applications given its tendency to remain soft after exposure to moisture. Furthermore, pigskin will not shrink when dried. Goatskin is incredibly soft and supple due to the natural oils present in the hides. Goatskin is typically thinner than other types of leather, but surprisingly, the tensile strength and abrasion resistance exceed those of cowhide and pigskin.



8700S

- Split Pigskin Leather Palm
- Blue/Red Striped Fabric
- Gunn Cut Pattern
- Starched Safety Cuff
- Sizes: L

8705L

- Grain Pigskin Leather Palm
- Size: L



8790

- Premium Grain Pigskin Leather Palm
- Assorted Solid Fabric Colors
- Three pairs each: Yellow, Red, Blue & Green within each dozen
- Gunn Cut Pattern
- Rubberized Safety Cuff
- Sizes: S-L



8650L

- Premium Grain Goatskin Leather Palm
- Red Canvas Back
- Gunn Cut Pattern
- Rubberized Safety Cuff
- Size: L

INSULATED LEATHER PALMS



7265

- Split Cowhide Leather Palm
- Fleece Lining
- Gunn Cut Pattern
- Rubberized Safety Cuff
- Size: L

7270

- Thinsulate® Lining
- Size: L

7275

- Pile Lining
- Sizes: M-XL



8750

- Grain Pigskin Leather Palm
- Thinsulate® Lining
- Gunn Cut Pattern
- Rubberized Safety Cuff
- Sizes: S-XL

8760

- Knit Wrist
- Size: L & XL



7260

- Split Cowhide Leather Palm
- Foam & Fleece Lining
- Gunn Cut Pattern
- Rubberized Safety Cuff
- Size: L



7410

- Split Cowhide Leather Palm
- Pile Lining
- Black Leather/Yellow Canvas Back
- Gunn Cut Pattern
- Rubberized Safety Cuff
- Sizes: M-XL

7460

- Thinsulate® Lining
- Size: S-XL



7465

- Split Cowhide Leather Palm
- Thinsulate® & Waterproof Lining
- Blue Leather/Yellow Canvas Back
- Gunn Cut Pattern
- Rubberized Safety Cuff
- Sizes: M-XL

7465LKW

- Convertible Cuff
- Changes from Safety Cuff to Knit Wrist
- Size: M & L



8765

- Grain Pigskin Leather Palm
- Filament Lining
- Gunn Cut Pattern
- Convertible Cuff
- Changes from Safety Cuff to Knit Wrist
- Sizes: S-XL

FREEZEBEATER® GLOVES

FREEZEBEATER® GLOVES KEEP WORKING HANDS
TOASTY WARM EVEN IN THE COLDEST CONDITIONS.



FreezeBeater®
really warm gloves

FreezeBeater® Features:

- Premium, Heavy-Duty Leather
- Three Layer Linings (Tricot, Thinsulate® & 7 mm. Foam)
- Heavy Duty Nylon Knit Wrists
- Leather Continuous Pull Tabs
- All Styles Available in Sizes M-XL



Style #	Description	Thinsulate®	Work Rating
FB300	Russet Split Cowhide, Mitten, Double Palm	C150	-20° F
FB400	Russet Split Cowhide, Double Palm & Reinforced Thumb Crotch	C150	-20° F
FB550	Tan Grain Pigskin	C150	-20° F
FB560	Tan Grain Pigskin, Textured PVC Palm & Fingers	C150	-20° F
FB650	Reverse Grain Goatskin	C150	-20° F
FB700	Gray Split Deerskin, Kevlar® Sewn	C150	-20° F
FB900	Gray Split Cowhide, Kevlar® Sewn, Double Palm	C200	-30° F



FB300



FB400



FB550



FB560



FB650



FB700



FB900

MINING GLOVES



1950

- Fingerless Double Palm Pigskin
- Hi-Vis Orange Back
- Reflective Knuckle Strap
- Fully Lined
- 3 mm. Foam Padded Back
- Kevlar® Sewn
- Knit Wrist
- Size: S-XL



1946

- Double Palm Pigskin
- Hi-Vis Orange Back
- Reflective Knuckle Strap
- Fully Lined
- 5 mm. Foam Padded Back
- Kevlar® Sewn
- Knit Wrist
- Size: XS-XXL



1952

- Double Palm Pigskin
- Blue Canvas Back
- Fully Lined
- 3 mm. Foam Padded Back
- Kevlar® Sewn
- Knit Wrist
- Size: S-XXL



8975

- Premium Brushed Pigskin Driver
- Interior Double Palm
- Wing Thumb
- 5 mm. Foam Padded Back
- Kevlar® Sewn
- Size: XS-XL

HI-VIS LEATHER GLOVES



F8821

- Premium Grain Pigskin Driver
- Unlined
- Keystone Thumb
- Hi-Vis Orange Back
- Lime Green Reflective Tape on Back
- Sizes: S-XL



F7250R

- Select Shoulder Split Cowhide Leather Palm
- Unlined
- Hi-Vis Orange Back
- Two-Tone Reflective Tape on Back & Cuff
- Gunn Cut Pattern
- Rubberized Safety Cuff
- Sizes: L



F8750

- Premium Grain Pigskin Leather Palm
- Thinsulate® Lining
- Hi-Vis Orange Back
- Lime Green Reflective Tape on Back
- Gunn Cut Pattern
- Rubberized Safety Cuff
- Sizes: L & XL

Thinsulate
INSULATION

3M



F8760

- Premium Grain Pigskin Leather Palm
- Thinsulate® Lining
- Hi-Vis Orange Back
- Lime Green Reflective Tape on Back
- Gunn Cut Pattern
- Knit Wrist with Continuous Pull Strap
- Sizes: L & XL

Thinsulate
INSULATION

3M



MIG-TIG WELDERS



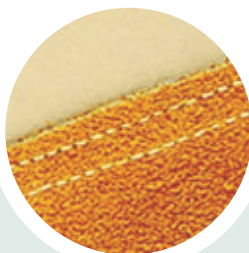
8130 Tig-Wel™

- Premium Grain Cowhide Leather
- Wing Thumb
- Kevlar® Sewn
- Split Leather Gauntlet Cuff
- Sizes: S-XXL



8135

- Standard Grain Cowhide Leather
- Wing Thumb
- Split Leather Gauntlet Cuff
- Sizes: S-XL



8530

- Premium Grain Goatskin Leather
- Wing Thumb
- Kevlar® Sewn
- Blue Split Cowhide Gauntlet Cuff
- Sizes: M-XL



8560

- Premium Grain Goatskin Leather
- Clute Pattern
- Split Leather Band Top
- Sizes: 7-12

COWHIDE WELDERS



7630

- Select Shoulder Split Cowhide Leather
- Full Sock Lining
- Red Color
- Fully Welted Seams
- Size: XL



7650 Tuf-Cor™

- Premium Side Split Cowhide Leather
- Kevlar® Sewn
- Gray Color
- Full Sock Lining
- Fully Welted Seams
- Wing Thumb
- Size: XL

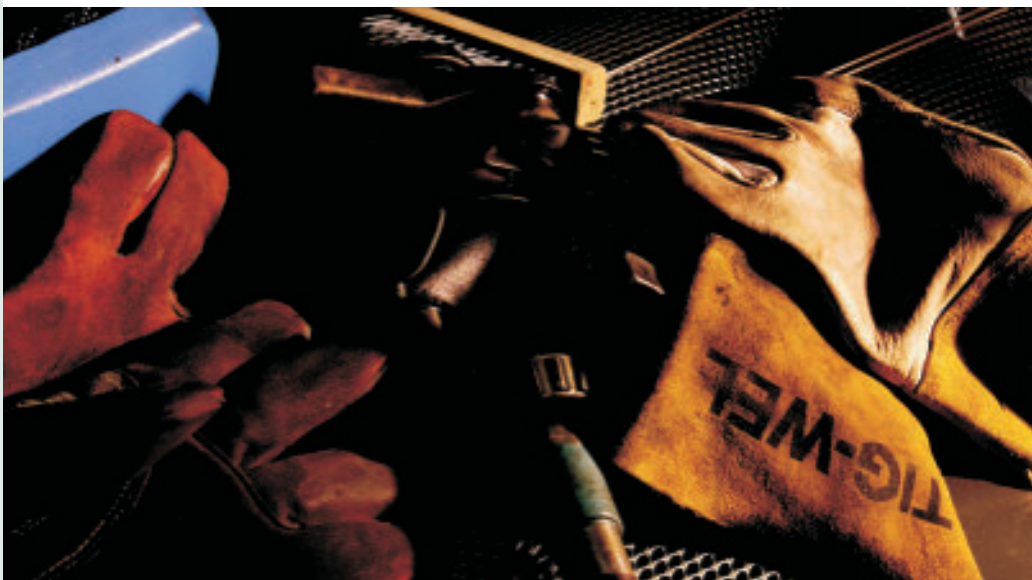


7670

- Premium Side Split Cowhide Leather
- Brown/Gray Color
- Reinforced Palm with Thumb Guard
- Kevlar® Sewn
- Full Sock Lining with Foam
- Fully Welted Seams
- Size: XL

7610A

- Premium Side Split Cowhide Leather
- Blue Color
- Reinforced Palm
- Thumb Guard
- Kevlar® Sewn
- Full Sock Lining with Foam
- Fully Welted Seams
- Size: XL



COWHIDE WELDERS



7605

- Shoulder Split Cowhide Leather
- Gray Color
- Wing Thumb
- Full Sock Lining
- Fully Weltd Seams
- Size: XL

7602: Ladies

7605LH: Left Hand Only

7600

- Economy Shoulder Leather
- 2-Piece Back
- Size: XL



7635

- Shoulder Split Cowhide Leather
- Russet Color
- Straight Thumb with Thumb Guard
- Kevlar® Sewn
- Full Sock Lining
- Fully Weltd Seams
- Size: XL

7608

- Brown Color
- Wing Thumb
- Size: XL



7610

- Select Shoulder Split Cowhide Leather
- Blue Color
- Reinforced Palm
- Straight Thumb
- Kevlar® Sewn
- Full Sock Lining with Foam
- Fully Weltd Seams
- Size: XL

7615

- Thumb Guard
- Patch Palm
- Size: XL

7620

- Reinforced Palm
- Kevlar® Sewn
- Size: XL



7625

- Shoulder Split Cowhide Leather
- Black Color
- Reinforced Palm
- Wing Thumb
- Kevlar® Sewn
- Full Sock Lining
- Fully Weltd Seams
- Size: XL

MECHANIC'S GLOVES



77271 Pit Pro™

- Premium Deerskin Leather Palm
- Fingertip & Knuckle Protectors
- Breathable Perforated Forchettes
- Black Spandex® Back
- Velcro® Wrist Closure
- Sizes: M-XL



77371 Pit Pro™

- Black Synthetic Leather Double Palm
- Fingertip & Knuckle Protectors
- Breathable Perforated Forchettes
- Blue Spandex® Back
- Velcro® Wrist Closure
- Sizes: M-XL



77071 Pit Pro™

- Black Synthetic Leather Palm
- Reinforced Thumb Crotch
- Breathable Perforated Forchettes
- Orange Spandex® Back
- Velcro® Wrist Closure
- Sizes: M-XL



77171 Pit Pro™

- Black Synthetic Leather Palm
- Reinforced Fingertips
- Breathable Perforated Forchettes
- Knuckle Flex Panels
- Black Spandex® Back
- Continuous Pull Tab
- Velcro® Wrist Closure
- Sizes: M-XL

MECHANIC'S GLOVES



77671 Pit Pro™

- Black Synthetic Leather Palm
- Reinforced Palm & Fingertips
- Breathable Perforated Forchettes
- Black & White Spandex® Back
- Velcro® Wrist Closure
- Sizes: M-XL



77771 Pit Pro™

- Tan Synthetic Leather Palm
- Black Sure-Grip Reinforced Palm
- Gel Foam Palm Padding
- Half-Finger Construction
- Blue & Black Spandex® Back
- Velcro® Wrist Closure
- Sizes: M-XL



77871 Pit Pro™

- Black Synthetic Leather Double Palm
- Fingertip Protectors
- Breathable Perforated Forchettes
- Black Spandex® Back
- Velcro® Wrist Closure
- Sizes: M-XL



77011 Pit Pro™

- Black Synthetic Leather Double Palm
- Fingertip & Knuckle Protectors
- Breathable Perforated Forchettes
- Knuckle Flex Panels
- Thinsulate® Lining
- Blue & Black Spandex® Back
- Velcro® Wrist Closure
- Sizes: M-XL



OGRE™

OGRE™ Gloves

- Orange Synthetic Leather Palm with Raised Silicone Grip or Corded Canvas Palm
- Kevlar® Reinforced Thumb Crotch
- Four-Way Stretch Spandex® Back
- Thermo-Plastic Rubber (TPR) Reinforced Knuckles, Fingers and Back of Hand
- TPR Pull Tab for Easy On/Off
- Neoprene Cuff with Gusset



7700M-3XL

- Hi-Vis Green Back, Orange Synthetic Leather Palm

7710M-3XL

- Hi-Vis Green Back, Orange Synthetic Leather Palm, Hipora® Insert



7701M-3XL

- Hi-Vis Orange Back, Orange Synthetic Leather Palm



7720M-3XL

- Hi-Vis Green Back, Corded Canvas Palm

7730M-3XL

- Hi-Vis Green Back, Corded Canvas Palm, Hipora® Insert

GENERAL INFORMATION: SUPPORTED, UNSUPPORTED & DISPOSABLE GLOVES



DEFINITIONS:

SUPPORTED: Supported gloves are made with fabric linings that provide “support” to the protective compounds (Nitrile, Latex, Neoprene, PVC etc.) that form the outer surface of the glove. Supported gloves are made by either “Dipping” or “Cutting & Sewing”. Dipping involves placing a knitted or woven fabric liner on a hand former and dipping the former into a protective polymer. Cut & Sewn Supported gloves are manufactured by cutting laminated, impregnated or coated fabrics into components and then stitching them together.



UNSUPPORTED: Unsupported gloves are made without supporting fabrics/liners. Ceramic formers with embossed grip patterns are dipped directly into protective polymers. Generally, unsupported gloves are available in palm thicknesses that range from 11 mils to 30 mils. A mil is 1/1000th of an inch. Unsupported gloves are sometimes lined with cotton flocking to absorb perspiration and provide comfort. Unsupported gloves provide excellent dexterity and chemical protection.

DISPOSABLE: Disposable gloves offer the most tactile sensitivity of any glove type. Most Disposable gloves are designed for single use, light duty applications. Available in both Medical and Industrial/Food Service Grades, most disposable gloves have palm thicknesses that range from 4 mils to 11 mils. Disposable gloves are normally powdered, chlorinated or polymer coated to allow for easy donning. Latex, Nitrile and Vinyl are the most prevalent compounds used to produce Disposable Gloves.

POLYMERS:

NATURAL RUBBER LATEX: Natural Latex is the milky sap of the Hevea Rubber Tree. Once extracted, the sap is centrifuged and processed to achieve optimal physical properties. Natural latex transforms from a liquid state to a solid state when exposed to heat (vulcanization) during the curing process. Natural Rubber generally withstands all liquids that mix with water like alcohols and acetones. Some individuals may experience allergic reactions to proteins found in Natural Rubber.

NITRILE: Acrylonitrile Butadiene Rubber (Nitrile) is a synthetic rubber developed as a substitute for Natural Rubber. It offers good protection against organic solvents, oils, bases and animal fats. It also provides excellent resistance to abrasion, snags, punctures and cuts. Nitrile is an extremely versatile synthetic rubber and it is used to produce a wide range of Disposable, Unsupported, Supported and Coated gloves.

NEOPRENE: Chloroprene (Neoprene) was developed in the 1930's by DuPont®. Neoprene was the first man-made rubber. It provides excellent chemical protection and it is impermeable to gases, vapors and moisture. Neoprene does not provide quite the same abrasion resistance as Nitrile. However, it offers good cut protection and resembles Natural Rubber in feel and flexibility. Neoprene resists degradation from sun, ozone and weather and it is used to make a variety of products including conveyor belts, hoses, wetsuits and gaskets.

POLYVINYL CHLORIDE: Polyvinyl Chloride (PVC, Vinyl, Plastic) is the thermoplastic polymer of Vinyl and Chloride. It is produced by combining resins and plasticizers and then fusing them through a heat process. The wear, flexibility and chemical resistance of PVC can be controlled by carefully regulating the compounding of these two ingredients. Polyvinyl Chloride provides protection against caustics, acids, bases, detergents and solvents.

POLYURETHANE: Polyurethane (PU, PUR) is a petroleum based thermoplastic elastomer with a cross-linked molecular structure. Polyurethane's molecular structure makes it incredibly tough and yet surprisingly soft, flexible and comfortable. PU contains no Latex proteins or chemical accelerators-both of which can cause allergic reactions. PU is odorless and it resists degradation by ozone, fuels, oils, acids and many solvents.

GUIDELINES FOR GLOVE COATINGS

Properties	Latex	Nitrile	Neoprene	PVC	PU
Strength	Excellent	Excellent	Very Good	Fair	Excellent
Barrier Protection	Excellent	Excellent	Very Good	Good	Excellent
Puncture Resistance	Very Good	Excellent	Good	Poor	Excellent
Chemical Resistance	Good	Excellent	Very Good	Poor	Very Good
Thermal Resistance	0-300° F	25-300° F	25-300° F	25-150° F	25-300° F
Elasticity	Excellent	Very Good	Excellent	Poor	Excellent
Allergen Content	Latex Proteins are present. Varies by Product	Very Good; no proteins but some residual chemicals	Very Good; no proteins, but some residual chemicals	Good; no proteins, but some chemicals & curing agents	Very Good; no proteins, but some residual chemicals
Comfort	Excellent	Very Good	Excellent	Fair	Very Good
Cost	Low	Medium	Medium	Low	High

CHEMICAL DEGRADATION CHART

= EXCELLENT
 = GOOD
 = FAIR
 = POOR
 = NOT RECOMMENDED

CHEMICAL	NEOPRENE	PVC	RUBBER	NITRILE
Acetaldehyde				
Acetic Acid				
Acetone				
Acetonitrile				
Ammonium Hydroxide <30%				
Amyl Acetate				
Amyl Alcohol				
Aniline				
Animal Fats				
Battery Acid				
Benzaldehyde				
Benzene				
Benzoyl Chloride				
Butane				
Butyl Acetate				
Butyl Alcohol				
Butyl Cellosolve				
Carbolic Acid				
Carbon Disulfide				
Carbon Tetrachloride				
Castor Oil				
Cellosolve Acetate				
Cellosolve Solvent				
Chlorobenzene				
Chloroform				
Chloronaphthalenes				
Chlorothene VG				
Chromic Acid				
Citric Acid				
Cottonseed Oil				
Cresol				
Cutting Oil				
Cyclohexane				
Cyclohexanol				
Dibutyl Phthalate				
Diethylamine				
Di-Isobutyl Ketone				
Dimethyl Formamide (DMF)				
Dimethyl Sulfoxide (DMSO)				
Diethyl Phthalate (DOP)				
Dioxane				
Ethyl Acetate				
Ethyl Alcohol				
Ethylene Dichloride				
Ethylene Glycol				
Ethyl Ether				
Ethylene Trichloride				
Formaldehyde				
Formic Acid				
Freon				
Furfural				
Gasoline				
Hexane				
Hydraulic Fluid - Petroleum Base				
Hydraulic Fluid - Ester Base				
Hydrazine 65%				
Hydrochloric Acid				
Hydrofluoric Acid				
Hydrogen Peroxide				
Hydroquinone				
Isobutyl Alcohol				
Iso-Octane				

PHYSICAL PERFORMANCE CHART FOR UNSUPPORTED GLOVES

	NEOPRENE	PVC	RUBBER	NITRILE
Abrasion Resistance				
Elongation				
Heat Resistance				
Tear Resistance				
Tensile Strength				

CHEMICAL	NEOPRENE	PVC	RUBBER	NITRILE
Isopropyl Alcohol				
Kerosene				
Lactic Acid				
Lauric Acid				
Linoleic Acid				
Linseed Oil				
Maleic Acid				
Methyl Acetate				
Methyl Alcohol				
Methylamine				
Methylene Bromide				
Methylene Chloride				
Methyl Cellosolve				
Methyl Ethyl Ketone (MEK)				
Methyl Isobutyl Ketone				
Methyl Methacrylate				
Mineral Oil				
Mineral Spirits				
Monoethanolamine				
Morpholine				
Muriatic Acid				
Naptha VM & P				
Nitric Acid <30%				
Nitric Acid 70%				
Nitric Acid Red Fuming				
Nitric Acid White Fuming				
Nitrobenzene				
Nitromethane				
Nitropropane				
Octyl Alcohol				
Oleic Acid				
Paint Remover				
Palmitic Acid				
Pentachlorophenol				
Pentane				
Perchloric Acid 60%				
Perchloroethylene				
Phenol				
Phosphoric Acid				
Piric Acid 60%				
Potassium Hydroxide <50%				
Printing Ink				
Propyl Acetate				
Propyl Alcohol				
Propylene Oxide				
Rubber Solvent				
Sodium Hydroxide <50%				
Stoddard Solvent				
Styrene				
Sulfuric Acid 95%				
Tannic Acid 65%				
Tetrahydrofuran (THF)				
Toluene				
Toluene Di-Isocyanate (TDI)				
Trichloroethylene (TCE)				
Tricresyl Phosphate (TCP)				
Triethanolamine 85% (TEA)				
Tung Oil				
Turbine Oil				
Turpentine				
Vegetable Oil				
Xylene				

This chart provides general guidelines, but it should be remembered that glove resistance is affected by other factors such as temperature, concentration of chemical products, glove thickness, immersion time, etc. We recommend testing the glove before using with hazardous chemicals.

SUPPORTED NITRILE

- Tough, Heavy-Duty Nitrile Coatings
- Abrasion, Snag & Oil Resistant
- Ideal for Handling Abrasive Materials



6951R Brawler™

- Premium Nitrile Fully Coated
- Rough Particle Finish
- Jersey Lining/Knit Wrist
- CE/EN 388: 4221
- Size: L

6950R Brawler™

- Palm Coated
- Sizes: L



6961 Brawler™

- Premium Nitrile Fully Coated
- Smooth Finish
- Jersey Lining/Safety Cuff
- CE/EN 388: 4221
- Sizes: S & L

6960 Brawler™

- Palm Coated
- Sizes: S-L



6950 Brawler™

- Premium Nitrile Palm Coated
- Smooth Finish
- Jersey Lining/Knit Wrist
- CE/EN 388: 4221
- Sizes: S & L

6951 Brawler™

- Fully Coated
- Sizes: S & L



6960R Brawler™

- Premium Nitrile Palm Coated
- Rough Particle Finish
- Jersey Lining/Safety Cuff
- CE/EN 388: 4221
- Size: L

6961R Brawler™

- Fully Coated
- Sizes: L

All Brawler™, Brawler II™ and Brawler Lite™ models are treated with Sanitized® to prevent bacterial and fungal growth when hands perspire. This treatment extends the life of glove by protecting against germs and odors. Sanitized® is a registered trademark of Sanitized AG®



SUPPORTED NITRILE



6990 Brawler Lite™

- Premium Nitrile Palm Coated
- Smooth Finish

- Ultra-light Interlock Lining/Knit Wrist
- CE/EN 388: 4111
- Sizes: S-XL



6980 Brawler II™

- Premium Nitrile Palm Coated
- Smooth Finish
- Interlock Lining/Knit Wrist
- CE/EN 388: 4111
- Sizes: S-XL

6981 Brawler II™

- Fully Coated
- Sizes: S-XL

VALUE SERIES



6885: Interlock Lined/Smooth Finish

- Standard Nitrile Fully Coated
- Knit Wrist
- Sizes: S-XL

6880

- Palm Coated/Knit Wrist
- Sizes: S-XL

Applications: Lumber Industry, Masonry, Recycling Operations, Machining, Sheet & Scrap Metal Handling & Degreasing



6860R: Jersey Lined/Rough Finish

- Standard Nitrile Fully Coated
- Safety Cuff
- Sizes: 9 & 10

6800R

- Palm Coated/Knit Wrist
- Size: 10

6850R

- Palm Coated/Safety Cuff
- Sizes: 9-11

6810R

- Fully Coated, Knit Wrist
- Size: 10



6800: Jersey Lined/Smooth Finish

- Standard Nitrile Palm Coated
- Knit Wrist
- Sizes: 8-11

6810

- Fully Coated/Knit Wrist
- Sizes: 8-11

6850

- Palm Coated/Safety Cuff
- Sizes: 8-11

6860

- Fully Coated, Safety Cuff
- Sizes: 8-11

SUPPORTED NEOPRENE



5812R

- Black Neoprene Dipped
- Rough Finish
- Jersey Lining
- 12-inch Length

5800R

- Knit Wrist

5814R

- 14-inch Length



5812

- Black Neoprene Dipped
- Smooth Finish
- Jersey Lining
- 12-inch Length

5814

- 14-inch Length

5818

- 18-inch Length



5800

- Black Neoprene
- Smooth Finish
- Jersey Lining
- Blue Knit Wrist

Applications: Metal Finishing, HazMat Operations, Chemical Processing & Transport, Plating Operations, Petrochemical Industry

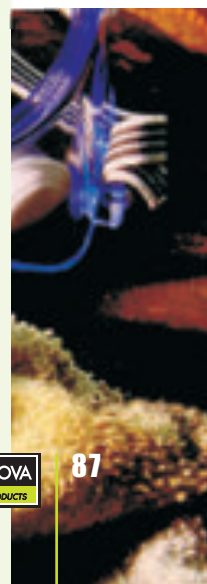


6872

- Green Double Dipped Neoprene
- Sandpaper Finish
- Interlock Lining
- 12-inch Length
- Size: S-XL

6874

- 14-inch Length
- Size: L & XL



SUPPORTED LATEX



5610

- Economy Rubber Dipped
- Crinkle Finish
- Canvas Lining
- Safety Cuff
- Size: L

Caution: These Products contain Natural Rubber Latex which may cause allergic reactions in some individuals.



5625

- Premium Rubber Dipped
- Smooth Finish
- Canvas Lining
- 4-inch Gauntlet Cuff
- Size: L

Applications:

Masonry,
Agriculture, Bottling,
Food Processing,
Lumber Industry, Glass
Handling, Recycling



5605

- Premium Rubber Dipped
- Crinkle Finish
- Jersey Lining
- Safety Cuff
- Size: L

5600

- Premium Rubber Dipped
- Canvas Lining, Safety Cuff
- Size: L



5618

- Premium Orange Rubber Dipped
- Crinkle Finish
- Jersey Lining
- Knit Wrist
- Size: L

5615

- Standard Rubber Dipped
- Jersey Lining, Knit Wrist
- Size: L

5620

- Economy Rubber Dipped
- Canvas Shell, Knit Wrist
- Size: L

SUPPORTED PVC



5012R

- Black Single Dipped PVC
- Rough Finish
- Interlock Lining
- 12-inch Length

5014R: 14-inch Length

5018R: 18-inch Length



5210J

- Green Double Dipped PVC
- Etched Finish
- Jersey Lining
- 10-inch Length

5200J: Knit Wrist, Jersey Lining

5212J: 12-inch Length, Jersey Lining

5214J: 14-inch Length, Jersey Lining

5218J: 18-inch Length, Jersey Lining



5112I

- Black Double Dipped PVC
- Etched Finish
- Interlock Lining
- 12-inch Length

5112J: 12-inch Length, Jersey Lining

5100I: Knit Wrist, Interlock Lined

5100J: Knit Wrist, Jersey Lined

5110I: 10-inch Length, Interlock Lining

5110J: 10-inch Length, Jersey Lining

5114I: 14-inch Length, Interlock Lining

5114J: 14-inch Length, Jersey Lining

5118I: 18-inch Length, Interlock Lining

5114SI

- Black Double Dipped PVC
- Sandpaper Finish
- Interlock Lining
- 14-inch Length

5114SJ: 14-inch Length, Jersey Lining

5100SI: Knit Wrist, Interlock Lined

5100SJ: Knit Wrist, Jersey Lined

5110SI: 10-inch Length, Interlock Lining

5110SJ: 10-inch Length, Jersey Lining

5112SJ: 12-inch Length, Jersey Lining

5112SI: 12-inch Length, Interlock Lining



5000

- Black PVC
- Smooth Finish
- Interlock Lining
- Knit Wrist

5010: 10-inch Length

5012: 12-inch Length

5014: 14-inch Length

5018: 18-inch Length



INSULATED PVC



5710F/C

- Orange Single Dipped PVC
- Foam Insulated Lining
- Smooth Finish
- Safety Cuff
- Size: L

5710F

- Orange Double Dipped PVC
- Safety Cuff
- Size: L



5710T

- Tan Double Dipped PVC
- Foam Insulated Lining
- Textured Finish
- Safety Cuff
- Size: L

5700F

- Orange Double Dipped PVC
- Foam Insulated Lining
- Textured Finish
- Knit Wrist
- Size: L

5700F/C

- Orange Single Dipped PVC
- Knit Wrist
- Size: L



5700G

- Orange Single Dipped PVC
- Foam Insulated Lining
- Smooth Finish
- 12-inch Length
- Size: L

Applications:

Petrochemical, Degreasing Operations,
Construction, Fishing, Cold Storage

SUPPORTED CUT & SEWN



6725

- Cut & Sewn Nitrile
- Perforated Nylon Back
- Interlock Lining
- Slip-On Style
- Men's Sizes: M-XL

6735

- Ladies' Sizes: S-L



6720

- Cut & Sewn Nitrile
- Perforated Back
- Interlock Lining
- Slip-On Style
- Men's Sizes: M-XL

6730

- Ladies' Sizes: M & L



6700

- Cut & Sewn Nitrile
- Interlock Lining
- Slip-On Style
- Men's Sizes: M-XL

6710

- Ladies' Sizes: S-L

Applications: Parts Assembly, Machining Operations Shipping & Receiving, Appliance Manufacturing



6500

- Breathable Vinyl Coated
- Seamless Machine Knit Shell
- 10-inch Length
- Sizes: XS-XL



6000

- Stretch Vinyl Impregnated
- Russet Color
- Slip-On Style
- Men's Sizes: M-XL

6010

- Ladies' Sizes: S-L



6740

- Heavy Weight Cut & Sewn Nitrile
- Driver's Style
- Jersey Lining
- Striped Canvas Back
- Sizes: S-XXL

UNSUPPORTED NITRILE

- Excellent Snag & Abrasion Resistance
- Resists Solvents, Oils & Animal Fats
- Free of Soluble Proteins
- Permeation Data available for Premium Styles



4410

- Premium Unlined Nitrile
- 11-mil
- 13-inch Length
- Diamond Embossed Grip
- CE/EN 388: 3101
- Sizes: 7-11

4430

- Standard Unlined
- 11-mil
- Sizes: S-XXL



4510

- Premium Unlined Nitrile
- 15-mil
- 13-inch Length
- Diamond Embossed Grip
- CE/EN 388: 3101
- Sizes: 7-11

4530

- Standard Unlined
- 15-mil
- Sizes: S-XXL



4610

- Premium Flock-Lined Nitrile
- 15-mil
- 13-inch Length
- Diamond Embossed Grip
- CE/EN 388: 4101
- Sizes: 7-11

4630

- Standard Flock Lined
- 15-mil
- Sizes: S-XXL

4620

- Premium Flock-Lined Nitrile
- 18-mil
- 13-inch Length
- Diamond Embossed Grip
- CE/EN 388 4101
- Sizes: 7-11



4522

- Premium Unlined Nitrile
- 22-mil
- 18-inch Length
- Pebble Grip
- CE/EN 388 4101
- Sizes: M-XXL

Applications:

Food Processing,
Petrochemical Industry,
Refining Operations,
Material Handling, Chemical
Processing, Automotive &
Aircraft Assembly, Printing,
Painting, Furniture
Manufacturing

UNSUPPORTED NEOPRENE & LATEX



4300

- Premium Neoprene On Latex
- Flock-Lined
- 28-mil
- 12-inch Length
- Straight Cuff
- CE/EN 388: 2110
- Sizes: 7-10

4360/S

- Premium Black Neoprene
- Flock-Lined
- 30-mil
- 12-inch Length
- Straight Cuff
- CE/EN 388: 4110
- Sizes: 7-10



4340

- Premium Orange Neoprene/Latex Blend
- Flock-Lined
- 28-mil
- 12-inch Length
- Straight Cuff
- CE/EN 388: 3110
- Sizes: S-XL



4320

- Standard Neoprene on Latex
- 19-mil
- Sizes: S-XL



4210N

- Premium Unlined Latex Canners
- Natural Color
- 18-mil
- 12-inch Length
- Scalloped Cuff
- CE/EN 388: 2011
- Sizes: 7-10

4215N

- Standard Latex Canners
- 15-mil/Natural Color
- Sizes: S-XL

4220B

- Premium Unlined Latex Canners
- Blue Color
- 18-mil
- 12-inch Length
- Scalloped Cuff
- CE/EN 388: 2011
- Sizes: 7-10

4226B

- Standard Latex Canners
- 15-mil/Blue Color
- Sizes: S-XL

4250R

- Standard Flock-Lined Latex
- Yellow Color, 18-mil
- Rolled Cuff
- Sizes: 7-10

4260R

- Standard Flock-Lined Latex
- Blue Color
- Sizes: 7-10

4254 S-XL

- Economy Flock-Lined Latex
- Yellow, Poly bagged/Pair

4260

- Premium Flock-Lined Latex
- Blue Color
- 18-mil
- 12-inch Length
- Scalloped Cuff
- Sizes: 7-10

4250

- Premium Flock-Lined Latex
- Yellow Color
- Sizes: 7-10

COMPONENT MATERIALS OF ALL STYLES COMPLY WITH ALL FEDERAL REGULATIONS FOR FOOD CONTACT

Caution: Some Products on this page contain Natural Rubber Latex which may cause allergic reactions in some individuals.



DISPOSABLE NITRILE

- Soft, Form-Fitting & Comfortable
- Snag & Puncture Resistant
- Textured Finish for Extra Gripping Power

Industrial Applications: Food Processing, Printing, Painting, Inspection, Automobile Maintenance & Repair

Medical Applications: Patient Exams, First Aid, Dentistry, Laboratories, Pharmaceutical Manufacturing, Home Health Care

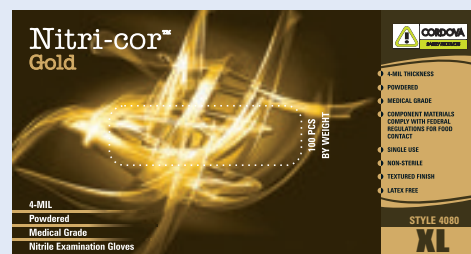


4080 Nitri-Cor Gold™

- Class I Medical Device
- 4-mil/Powdered
- Sizes: S-XL

4085 Nitri-Cor Gold™

- Powder Free
- Sizes: S-XL



4090 Nitri-Cor Silver™

- Industrial/Food Service Grade
- 4-mil/Powdered
- Sizes: S-XL

4095 Nitri-Cor Silver™

- Powder Free
- Sizes: S-XL



4091 Nitri-Cor Platinum™

- Industrial/Food Service Grade
- 8-mil/Powdered
- Sizes: S-XL

4097 Nitri-Cor Platinum™

- Powder Free
- Sizes: S-XL



4092 Nitri-Cor Soft™

- Industrial/Food Service Grade
- 3-mil/Powdered
- Sizes: S-XL

4096 Nitri-Cor Soft™

- Powder Free
- Sizes: S-XL

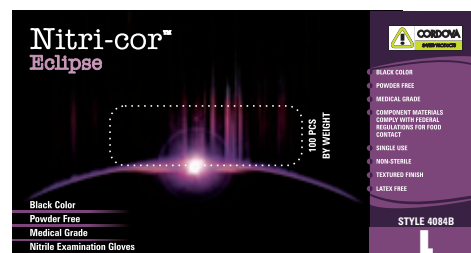


4084B Nitri-Cor Eclipse™

- Class I Medical Device
- Black Color
- 4-mil/Powder Free
- Sizes: S-XL

4083B S-XL

- Black Color
- Industrial Grade



DISPOSABLE LATEX, VINYL & PE



4000

LATEX

Style	Trade Name	Description	Sizes
4000	Cordova Gold™	Class I Medical Device, Powdered	XS-XL
4010	Cordova Gold™	Class I Medical Device, Powder Free	XS-XL
4020	Cordova Silver™	Industrial/Food Service Grade, Powdered	XS-XL
4015	Cordova Silver™	Industrial/Food Service Grade, Powder Free	XS-XL
4025	Cordova Silver II™	Commodity/Food Service Grade, Powdered	S-XL
4026	Cordova Silver II™	Commodity/Food Service Grade, Powder Free	S-XL



4071

VINYL

Style	Trade Name	Description	Sizes
4050	Syn-Cor Gold™	Class I Medical Device, Powdered	S-XL
4060	Syn-Cor Gold™	Class I Medical Device, Powder Free	S-XL
4075	Syn-Cor Silver™	Industrial/Food Service Grade, Powdered	S-XL
4062	Syn-Cor Silver™	Industrial/Food Service Grade, Powder Free	S-XL
4074	Syn-Cor Silver II™	Commodity/Food Service Grade, Powdered	S-XXL
4064	Syn-Cor Silver II™	Commodity/Food Service Grade, Powder Free	S-XXL
4071	Syn-Cor Blue™	Industrial/Food Service Grade, Powdered	S-XL
4072	Syn-Cor Blue™	Industrial/Food Service Grade, Powder Free	S-XL
4065	Syn-Cor Green™	Industrial Food Service Grade, Powdered, 6.5-mil	S-XL
4067	Syn-Cor Plus™	Stretch, Industrial/Food Service Grade, Powder Free	S-XXL
4077	Syn-Cor Plus™	Stretch, Industrial/Food Service Grade, Powdered	S-XXL

Caution: Some Products on this page contain Natural Rubber Latex which may cause allergic reactions in some individuals.

POLYETHYLENE

Style	Description	Sizes
4100	Low Density Polyethylene (LDPE), Embossed, Industrial/Food Service Grade, 100/Envelope	S-XL
4102	High Density Polyethylene (HDPE), Embossed Grip, Industrial/Food Service Grade, 100/Bag	M-XL



4100



COMPONENT MATERIALS OF ALL STYLES COMPLY WITH ALL FEDERAL REGULATIONS FOR FOOD CONTACT



HIGH VISIBILITY COTTON

**2715****2715**

- Hi-Vis Lime Green Canvas
- Black PVC Dots
- Lime Green Knit Wrist
- Size: Men's Large

2710

- Hi-Vis Orange Canvas

2720

- Hi-Vis Yellow Canvas

2890

- Hi-Vis Orange Corded Canvas
- Orange PVC Dots
- Size: Men's Large

**2860C****2860C**

- Hi-Vis Orange Double Palm
- 100% Cotton Canvas
- Orange Knit Wrist
- Size: Men's Large

2870C

- Hi-Vis Lime Green Double Palm

2865BD

- Hi-Vis Orange Double Palm
- 100% Cotton Canvas
- Black PVC Dots
- Orange Knit Wrist
- Size: Men's Large

2875BD

- Hi-Vis Lime Green Double Palm
- Black PVC Dots

**2850CD****2850CD**

- Hi-Vis Lime Green Double Palm
- 100% Cotton Corded Canvas
- Lime Green Knit Wrist
- Size: Men's Large

2830CD

- Hi-Vis Yellow Double Palm

2840CD

- Hi-Vis Orange Double Palm

**2820CD****2820CD**

- Hi-Vis Yellow Double Palm
- Polyester/Cotton Corded Canvas
- Yellow Knit Wrist
- Size: Men's Large

2800CD: Hi-Vis Orange Double Palm**2810CD:** Hi-Vis Lime Green Double Palm**2880CDB FR:** Pyro-Cor™ FR Hi-Vis Orange Black FR Knit wrist**2885CDB FR:** Pyro-Cor™ FR Hi-Vis Lime, Black FR Knit wrist

DOUBLE PALMS & HOT MILLS

Double Palms

All Styles Available in Men's Large

Style	Description	Cuff Type
2400	Nap-Out Double Palm	Band Top
2410	Nap-Out Double Palm	Natural Knit Wrist
2450	Nap-Out Double Palm	Gauntlet Cuff
2420	Nap-In Double Palm	Band Top
2430	Nap-In Double Palm	Natural Knit Wrist
2432	Nap-In Double Palm (Economy Weight)	Natural Knit Wrist
2440	Nap-In Double Palm	Gauntlet Cuff
24101	Nap-In Double Palm	Red Knit Wrist
2460	Nap-In Double Palm (Economy Weight)	Red Knit Wrist
24201	Nap-In Double Palm	Blue Knit Wrist
2435CDR	Nap-In, Corded Double Palm	Red Knit Wrist
2435CD	Nap-In, Corded Double Palm	Natural Knit Wrist
2435SC	Nap-In, Corded Double Palm	Safety Cuff
2445CD	Nap-In, Corded Double Palm Cotton	Natural Knit Wrist

2400



2420



24101



Hot Mills

All Styles Available in Men's Large



2500C

- Premium Weight Hot Mill
- Band Top

2500

- Standard Weight Hot Mill
- Band Top

2505

- Standard Weight Hot Mill
- Gauntlet Cuff



2515

- Heavy Weight Hot Mill
- 3-Ply Palm, Burlap Lined
- Band Top

2515G

- Heavy Weight Hot Mill
- 3-Ply Green Palm, Burlap Lined
- Band Top

2520

- Heavy Weight Hot Mill
- 3-Ply Palm, Cotton Lined
- Band Top



2525G

- Heavy Weight Hot Mill
- 3-Ply Palm, Burlap Lined
- Green Palm and Forefinger
- Gauntlet Cuff

2525

- Heavy Weight Hot Mill
- 3-Ply Palm, Burlap Lined
- Gauntlet Cuff

TERRYS & CHORES



3224/P



3214GI



3220DD

TERRYS



3255

Style	Description	Sizes
3224/P	Loop-Out, Premium, 24-ounce, Natural, Knit Wrist	L
3224	Loop-Out, 24-ounce, Natural, Knit Wrist	S, L, XL
3224G	Loop-Out, 24-ounce, Gray, Knit Wrist	S & L
3218	Loop-Out, 18-ounce, Natural, Knit Wrist	S & L
3218G	Loop-Out, 18-ounce, Gray, Knit Wrist	S & L
3214I	Loop-In, 14-ounce, Natural, Knit Wrist	S & L
3214GI	Loop-in, 14-ounce, Gray, Knit Wrist	L
3220DD	Loop-In, 14-ounce, Natural, Knit Wrist, Two Sides PVC Dots & Fingertips	L
3255	Terry Sleeve, Standard Weight, Natural	15-inch
3258	Terry Sleeve, Standard Weight, Natural	18-inch

2316S

- Yellow Chore
- Canvas Back
- PE Safety Cuff
- Size: Men's Large

2316

- Natural Knit Wrist
- 2316 G**
- PE Gauntlet

2318

- Yellow Full Chore
- Quilted
- Yellow Knit Wrist
- Size: Men's Large

2320

- Yellow Chore
- Single Ply
- Red Knit Wrist
- Size: Men's Large



CANVAS



2000B



2000

8, 10 & 12-OUNCE CANVAS

Item #	Description	Size
2000	Premium 8-oz. Cotton Canvas, Clute Pattern, Knit Wrist	L
2000RW	Premium 8-oz. Ramie/Cotton, Wing Thumb, Knit Wrist	L
2000V	Standard 8-oz. Cotton Canvas, Clute Pattern, Knit Wrist	L
2002	Standard 8-oz. Cotton Canvas, Clute Pattern, Knit Wrist	Ladies
2000W	Standard 8-oz. Cotton Canvas, Wing Thumb, Knit Wrist	L
2000B	Standard 8-oz. Cotton Canvas, Clute Pattern, Band Top	L
2100	Standard 10-oz. Cotton Canvas, Clute Pattern, Knit Wrist	L
2100CD	Standard 10-oz. Cotton Corded Canvas, Clute Pattern, Knit Wrist	L
2200C	Premium 12-oz. Cotton Canvas, Clute Pattern, Knit Wrist	L
2200	Standard 12-oz. Cotton Canvas, Clute Pattern, Knit Wrist	L



2608



2670

DOTTED CANVAS

Item #	Description	Size
2608	Standard 8-oz. Cotton Canvas, Clute Pattern, Black PVC Dots, Knit Wrist	L
2602	Standard 8-oz. Cotton Canvas, Clute Pattern, Black PVC Dots, Knit Wrist	Ladies
2680	Standard 8-oz. Cotton Canvas, Clute Pattern, Orange PVC Dots, Natural Knit Wrist	L
2610	Standard 10-oz. Cotton Canvas, Clute Pattern, Black PVC Dots, Knit Wrist	L
2612	Standard 10-oz. Cotton Canvas, Clute Pattern, Black PVC Dots, Knit Wrist	Ladies
2670	Standard 10-oz. Cotton Canvas, Clute Pattern, Orange PVC Dots, Orange Knit Wrist	L
2640	Standard 12-oz. Cotton Canvas, Clute Pattern, Black PVC Dots, Knit Wrist	L
2640K	Standard 12-oz. Cotton Canvas, Clute Pattern, Orange PVC Dots, Kevlar® Sewn, Knit Wrist	L
2650/12	Standard 12-oz. Cotton Canvas, Clute Pattern, Orange PVC Dots, Knit Wrist	L



2680

JERSEYS & INSPECTORS



1300C



1400C



1510



1600



1120L

JERSEYS

Style	Description	Sizes
1300C	Natural, 2-Piece Reversible, Knit Wrist (1302C: Ladies' Large)	L
1300BL	Brown, 2-Piece Reversible, Knit Wrist (1300BS: Ladies' Large)	L
1400C	Medium Weight, 100% Cotton, Brown Jersey, Knit Wrist (1402C: Ladies' Large)	L
1410C	Standard 100% Cotton, Brown Jersey, Clute Cut, Knit Wrist	L
1400	Medium Weight Brown Jersey, Clute Cut, Knit Wrist	L, XL
1400RC	Ramie/Cotton/Poly Brown Jersey, Clute Cut, Knit Wrist (1402RC: Ladies' Large)	L
1400P	Standard Brown Jersey, Clute Cut, Knit Wrist (1402: Ladies' Large)	L
1406	Kid's Brown Jersey, Clute Cut, Knit Wrist	Kid's
1430	Heavy Weight Brown Jersey, Clute Cut, Knit Wrist	L
1450	Heavy Weight Blue Jersey, Clute Cut, Knit Wrist (1452: Ladies' Large)	L
1500	PVC Dotted (Large Dots) Brown Jersey, Clute Cut, Knit Wrist (1502: Ladies' Large)	L
1510	PVC Dotted (Micro Dots) Brown Jersey, Clute Cut, Knit Wrist (1512: Ladies' Large)	L
1600	Red Lined Brown Jersey, Slip-On Style	L

INSPECTORS

Style	Description	Sizes
1100	Men's Blended Lightweight Lisle, Unhemmed (1102: Ladies' Large)	L
1100C	Men's 100% Cotton Lisle, Unhemmed (1102C: Ladies' Large)	L & XL
1114	Men's 100% Cotton Lisle, 14-inch, Unhemmed	L
1120	Men's Medium Weight, 100% Cotton, Hemmed (1120S: Ladies' Large)	L & XL
1130L	Men's Heavy Weight, 100% Cotton, Hemmed (1130S: Ladies' Large)	L
1800	Nylon Inspector, 2-Piece, Hemmed (1802: Ladies' S-L)	M, L, XL
1850L	Men's Stretch Full Fashion Nylon, Inset Thumb (1850S: Ladies' Large)	L
1880	Lint-Free Stretch Nylon, Reversible, Hemmed Cuff (1882: Ladies' S-L)	S, M, L



1800L



1850L

S E R V I C E S

We sell to qualified distributors only!

Our long standing policy of distributor-only sales is the foundation of Cordova's trust with our customers that have been generous enough to solidify our position in the industrial safety market.

"One Stop Shop"

Gloves, Rainwear, Boots, Disposable Clothing, Safety Eyewear, Respirators, Safety Vests, Earplugs, Helmets, Back Support Belts, Barricade Tape & Safety Fencing.

Convenient Shipping Locations

Memphis, Tennessee & Chino, California

Reasonable Pre-Paid Minimums

Confidential Drop Shipments

Import & Domestic Private Labeling Programs

Specialty Product Development

Customize protective gear to better accommodate your customer's needs.

Generous Sampling Program

Experienced Sales Team

Customer Satisfaction Guaranteed

If a Cordova product does not meet or exceed the standard of the originally sampled item, Please return it for a full refund.



Memphis Headquarters

4025 Viscount Avenue
Memphis, Tennessee 38118
Phone 800.458.8763
Fax 901.458.3343

West Coast Office

4451 Eucalyptus Avenue
Suite 310
Chino, California 91710
Phone 877.264.9832
Fax 877.264.9833

Spectra® is a registered trademark of Honeywell®

Kevlar® and Thermastat® are registered trademarks of DuPont®

Lycra® is a registered trademark of Invista™

Velcro® is a registered trademark of Velcro Industries B.V.

Thinsulate® is a registered trademark of 3M®

Sanitized® is a registered trademark of Sanitized AG®

Taeki5® is a registered trademark of QS Safety

MicroFinish®, ActivGrip® and PowerGrab® Thermo are registered trademarks of Towa Corporation

1.800.458.8763

www.cordovaisc.com

